

**ROMÂNIA**  
**JUDEȚUL VASLUI**  
**CONSILIUL JUDEȚEAN**

**HOTĂRÂREA Nr.249 /2016**

**privind modificarea structurii organizatorice, a organigramei și a statului de funcții al personalului din cadrul Spitalului Județean de Urgență Vaslui**

având în vedere:

- expunerea de motive a Președintelui Consiliului Județean Vaslui privind propunerea de modificare a statului de funcții al Spitalului Județean de Urgență Vaslui;

- adresa nr. 14596/17.11.2016 a Spitalului Județean de Urgență Vaslui;

- avizul Ministerului Sănătății nr. XI/A/61225/VVV/5597/01.11.2016;

în conformitate cu dispozițiile:

- Ordinului M.S nr. 1224/2010 privind aprobarea normativelor de personal pentru asistența medicală spitalicească, precum și pentru modificarea și completarea Ordinului ministrului sănătății publice nr. 1.778/2006 privind aprobarea normativelor de personal;

- Ordonanței de Urgență a Guvernului nr.162/2008 privind transferul ansamblului de atribuții și competențe exercitate de Ministerul Sănătății Publice către autoritățile administrației publice locale, cu modificările și completările ulterioare;

- Hotărârii Guvernului nr. 56/2009 pentru aprobarea Normelor metodologice de aplicare a Ordonanței de urgență a Guvernului nr. 162/2008;

în temeiul art. 91 alin (1), lit. a) și alin.(2), lit. c) și al art. 97 alin. (1) din Legea nr. 215/2001 privind administrația publică locală, republicată, cu modificările și completările ulterioare;

**Consiliul Județean Vaslui**

**HOTĂRĂȘTE:**

**Art. 1.** – Se aprobă structura organizatorică a Spitalului Județean de Urgență Vaslui prevăzută în anexa nr. 1 care face parte integrantă din prezenta hotărâre.

**Art. 2.** – Se aprobă Organigrama Spitalului Județean de Urgență Vaslui prevăzută în anexa nr. 2 care face parte integrantă din prezenta hotărâre.

**Art. 3.** – Se aprobă Statul de funcții al Spitalului Județean de Urgență Vaslui prevăzut în anexa nr. 3 care face parte integrantă din prezenta hotărâre.

**Art. 4.** – La data intrării în vigoare a prezentei hotărâri anexele nr. 1 și nr. 2 din Hotărârea Consiliului Județean Vaslui nr. 65/2016 și anexa la Hotărârea Consiliului Județean Vaslui nr. 129/2013 se abrogă.

**Art. 5.** – Aducerea la îndeplinire a prezentului act administrativ revine Spitalului Județean de Urgență Vaslui.

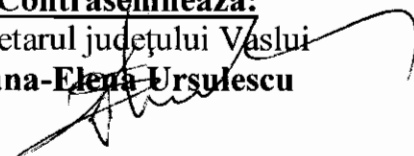
**Vaslui, 23 noiembrie 2016**

**PREȘEDINTE,**  
**Dumitru Buzatu**



**Contrasemnează:**

Secretarul județului Vaslui  
**Diana-Elena Ursulescu**



**STRUCTURA ORGANIZATORICA A SPITALULUI  
JUDEȚEAN DE URGENTA VASLUI**

aprobata prin OMS nr.837/02.06.2010 modificat prin OMS nr. 1060/22.07.2010  
cu modificările și completările ulterioare prin Hotărâri ale Consiliului Județean Vaslui  
in baza avizelor MS:

nr: XI/A/700004/CSA/19.01.2011  
nr: XI/A/10198/CSA/2737/15.3.2011  
nr: XI/A/25399/CSA/05.05.2011  
XI/A/43289,54824/RL/1377/5.10.2011  
nr. XI/A67830/RL/4207/19.12.2011  
NR. XI/A/25068,27588/EN/4521/30.04.2013  
NR. XI/A/61225/VVV/5597/01.11.2016

- Secția medicina internă	89 paturi
din care:	
- compartiment gastroenterologie	15 paturi
- compartiment diabet zaharat, nutriție și boli metabolice	10 paturi
- compartiment reumatologie	5 paturi
- compartiment nefrologie	5 paturi
- Secția cardiologie	26 paturi
- Secția chirurgie generala	74 paturi
din care:	
- compartiment neurochirurgie	5 paturi
- compartiment urologie	7 paturi
- Secția chirurgie și ortopedie infantila	25 paturi
- Secția ortopedie și traumatologie	25 paturi
- Secția obstetrica-ginecologie	55 paturi
- Secția neonatologie	40 paturi
din care:	
- compartiment prematuri	10 paturi
- compartiment terapie intensiva	8 paturi
- Secția neurologie	59 paturi
- compartiment recuperare medicală neurologie	9 paturi
- Compartiment oftalmologie	20 paturi
- Secția ORL	25 paturi
din care:	
- chirurgie orala și maxilo-faciala	5 paturi
- Secția pediatrie	54 paturi
- Secția ATI	20 paturi
- Secția pneumologie	88 paturi
din care:	
- compartiment TBC	50 paturi
- Compartiment oncologie medicala	20 paturi*
din care:	
- compartiment hematologie	5 paturi
- Compartiment recuperare, medicină fizică și balneologie	16 paturi
- Compartiment dermatovenerologie	16 paturi
- Secția boli infecțioase	55 paturi
din care:	
- compartiment HIV/SIDA	5 paturi
- compartiment copii	10 paturi

- Secția psihiatrie

80 paturi

- Unitate Primire Urgente (UPU)- SMURD

- Cabinet medicina dentara de urgenta

- Camera de garda

(pavilionul unde funcționează secțiile de psihiatrie și boli infecțioase)

**TOTAL**

**787 paturi**

**24 paturi**

**18 paturi**

- Insoțitori

- Spitalizare de zi

**Notă: spitalul are aprobate 827 de paturi, din care 40 de paturi se închid temporar până li se va da o altă destinație**

- Farmacia 1 (fosta nr.78 - pavilion central)

- Farmacia 2 (fosta nr.67)

- Farmacia 3 (fosta nr.65)

- Bloc operator central

- Sala de operații oftalmologie

- UTS

- Sterilizare

- Serviciul de internări si relații cu publicul

- Laborator analize medicale cu punct de lucru in ambulatoriul integrat

- Laborator radiologie si imagistica medicala

- compartiment CT

- Laborator endoscopie digestiva

- Serviciul de anatomie patologica

- compartiment citologie

- compartiment histopatologie

- compartiment prosectura

- Laborator explorări funcționale

- Centru de sănătate mintala (CSM)

- Centrul de sănătate mintala (CSM) - copii

- Laborator recuperare, medicina fizica si balneologie

- Serviciul județean de medicina legala

- Laborator bacteriologie BK

- Compartiment de endoscopie bronsica

- Serviciul de prevenire a infecțiilor asociate asistenței medicale

- Compartiment asistenta sociala

- Cabinet diabet zaharat, nutriție si boli metabolice

- Cabinet diabet zaharat, nutriție si boli metabolice - educație specifica

- Cabinet oncologie medicala

- Cabinet medicina sportiva

- Cabinet boli infecțioase

- Cabinet planificare familiala

- Serviciul evaluare, statistica medicala si informatica

- Dispensar TBC

- radiologie

- cabinet consultații

- cabinet asistente de teren

- registratura si fișier

- Dispensar TBC Negrești

Ambulatoriul integrat cu cabinete in specialitățile:

- medicina interna

- cardiologie

- ORL

- oftalmologie

- chirurgie generala

- obstetrica-ginecologie

- neurologie

- ortopedie si traumatologie

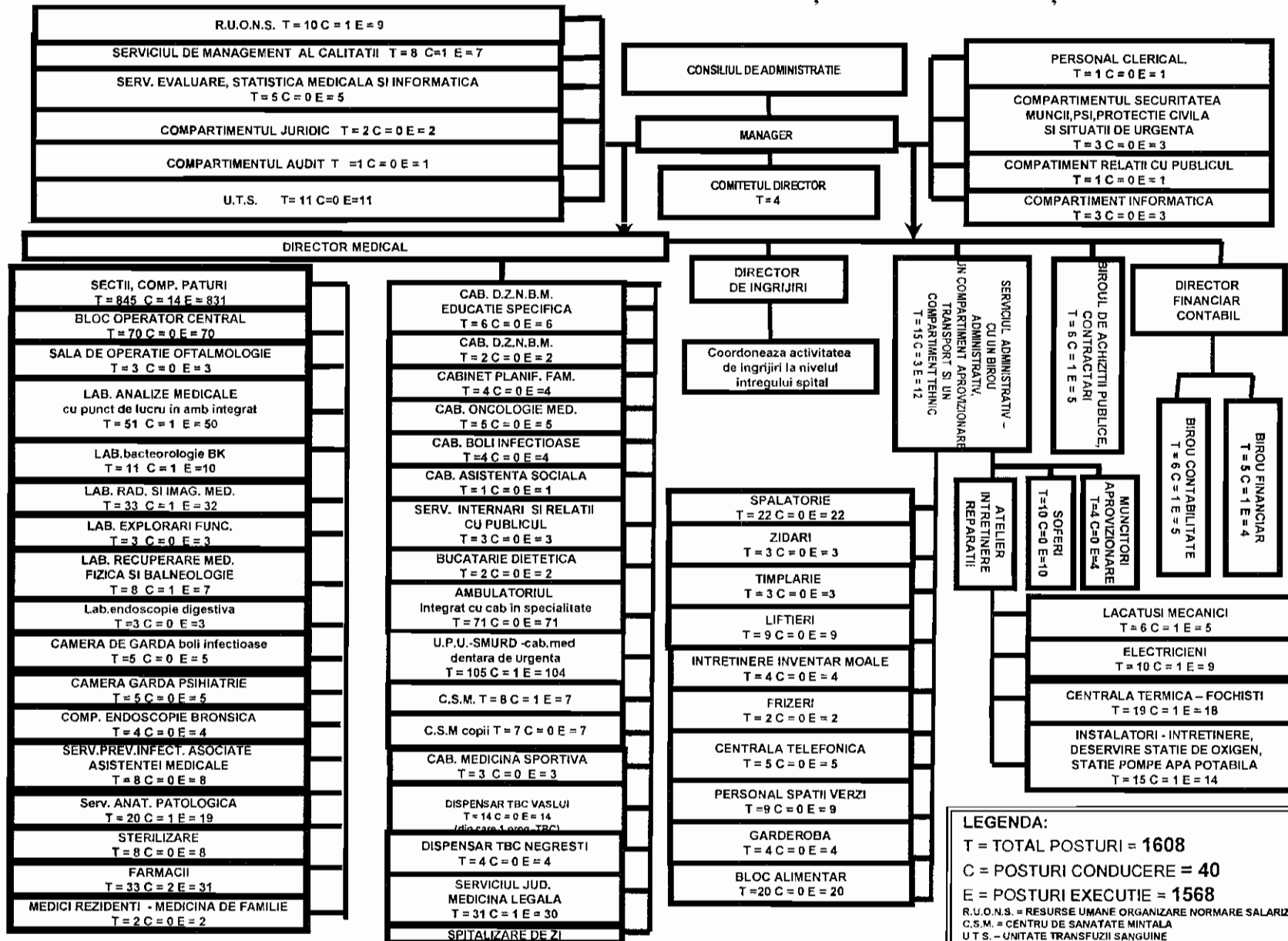
- dermatovenerologie

- endocrinologie
- urologie
- recuperare, medicina fizica si balneologie
- chirurgie pediatria
- cabinet audiologie
- pediatrie
- cardiologie pediatria
- audiologie
- medicina muncii
- recuperare, medicina fizica si balneologie
- reumatologie
- pneumologie
- nefrologie
- alergologie și imunologie clinică
- Punct de lucru al Laboratorului de analize medicale al spitalului
- Laborator radiologie si imagistica medicala
- Laborator recuperare, medicina fizica și balneologie
- Laborator de explorări funcționale
- Săli de tratamente
- Sterilizare
- Compartiment statistica medicala
- Fișiere
- Aparat funcțional

La nivelul spitalului funcționează Centrul Județean de Diabet zaharat, nutriție si boli metabolice

**\* își va relua activitatea la prezentarea medicilor la post**

ORGANIGRAMA SPITALULUI JUDEȚEAN DE URGENȚĂ VASLUI



**LEGENDA:**  
 T = TOTAL POSTURI = 1608  
 C = POSTURI CONDUCERE = 40  
 E = POSTURI EXECUTIE = 1568  
 R.U.O.N.S. = RESURSE UMANE ORGANIZARE NORMARE SALARIZARE  
 C.S.M. = CENTRU DE SANATATE MINTALA  
 U.T.S. - UNITATE TRANSFUZII SANGUINE  
 D.Z.N.B.M. = DIABET ZAHARAT NUTRITIE BOLI METABOLICE  
 U.P.U. - SMURD = UNITATE PRIMIRE URGENTE - SERVICIUL MOBIL DE URGENTA REANIMARE DESCARCARARE

**CONSILIUL JUDEȚEAN VASLUI**

ANEXA. nr. 3 la HCJ nr. 249 /2016

**STAT DE FUNCȚII**  
 pentru Spitalul Județean de Urgență Vaslui

Nr. crt.	COMPARTIMENT/FUNCTIE	Nivel studii	Nr. Posturi normate
<b>I. COMITET DIRECTOR</b>			<b>4</b>
1	MANAGER, GR.II	S	1,0
2	DIRECTOR MEDICAL, GR.II	S	1,0
3	DIRECTOR FINANCIAR CONTABIL, GR.II	S	1,0
4	DIRECTOR DE INGRIJIRI, GR.II	S	1,0
<b>II. SECTIA CHIRURGIE GENERALA - 74 paturi din care: compartiment neurochirurgie - 5 paturi ; compartiment</b>			<b>68,0</b>
5	MEDIC SEF SECTIE, GR.II	S	1,0
6-11	MEDIC PRIMAR	S	6,0
12-14	MEDIC SPECIALIST	S	3,0
15	MEDIC REZIDENT AN V	S	1,0
16	ASISTENT MEDICAL PR SEF	PL	1,0
17-32	ASISTENT MEDICAL PR	PL	16,0
33-38	ASISTENT MEDICAL	PL	6,0
39-44	ASISTENT MEDICAL DEB	PL	6,0
45	REGISTRATOR MEDICAL DEB.	M	1,0
46-56	INFIRMIERA	G	11,0
57	INFIRMIERA DEB.	G	1,0
58-68	INGRIJITOARE	G	11,0
69-72	BRANCARDIER	G	4,0
<b>III. SECTIA CHIRURGIE SI ORTOPEDIE INFANTILA - 25</b>			<b>24,0</b>
73	MEDIC SEF SECTIE, GR I	S	1,0
74-75	MEDIC SPECIALIST	S	2,0
76	MEDIC REZIDENT AN V	S	1,0
77	MEDIC REZIDENT AN IV	S	1,0
78	ASISTENT MEDICAL PR SEF	PL	1,0
79	ASISTENT MEDICAL LICENTIIAT PR.	S	1,0
80-86	ASISTENT MEDICAL PR	PL	7,0
87	ASISTENT MEDICAL	PL	1,0
88-91	INFIRMIERA	G	4,0
92-94	INGRIJITOARE	G	3,0
95-96	BRANCARDIER	G	2,0
<b>IV. SECTIA ORTOPEDIE SI TRAUMATOLOGIE - 25 paturi</b>			<b>27,0</b>
97	MEDIC SEF SECTIE, GR.I	S	1,0
98	MEDIC PRIMAR	S	1,0
99-100	MEDIC SPECIALIST	S	2,0
101	MEDIC REZIDENT AN V	S	1,0
102	ASISTENT MEDICAL PR SEF	PL	1,0
103-109	ASISTENT MEDICAL PR	PL	7,0
110-111	ASISTENT MEDICAL	PL	2,0
112	REGISTRATOR MEDICAL	PL	1,0
113-115	INFIRMIERA	G	3,0
116	INFIRMIERA DEBUTANTA	G	1,0
117-119	INGRIJITOARE	G	3,0
120-123	BRANCARDIER	G	4,0

<b>V. SECTIA OBSTETRICA GINECOLOGIE - 55 paturi</b>			<b>72,0</b>
124	MEDIC SEF SECTIE, GR II	S	1,0
125-130	MEDIC PRIMAR	S	6,0
131	MEDIC SPECIALIST	S	1,0
132	MEDIC REZIDENT AN V	S	1,0
133	MEDIC REZIDENT AN I	S	1,0
134	ASISTENT SOCIAL	S	1,0
135	ASISTENT MEDICAL PR SEF	PL	1,0
136-157	ASISTENT MEDICAL PR	PL	22,0
158-163	ASISTENT MEDICAL	PL	6,0
164-166	ASISTENT MEDICAL DEB.	PL	3,0
167	REGISTRATOR MEDICAL	M	1,0
168-175	INFIRMIERA	G	9,0
176-191	INGRIJITOARE	G	15,0
192-195	BRANCARDIER	G	4,0
<b>VI. COMPARTIMENTUL OFALMOLOGIE - 20 paturi</b>			<b>22,0</b>
196-197	MEDIC PRIMAR	S	2,0
198-199	MEDIC SPECIALIST	S	2,0
200-206	ASISTENT MEDICAL PR	PL	7,0
207	ASISTENT MEDICAL	PL	1,0
208	REGISTRATOR MEDICAL DEB.	PL	1,0
209-212	INFIRMIERA	G	4,0
213-217	INGRIJITOARE	G	5,0
<b>VII. SECTIA O.R.L. - 25 paturi din care comp.chirurgie orala si maxilo-faciala - 5 paturi</b>			<b>24,0</b>
218	MEDIC SEF SECTIE, GR.I	S	1,0
219-220	MEDIC PRIMAR	S	2,0
221-222	MEDIC SPECIALIST	S	2,0
223	ASISTENT MEDICAL PR SEF	PL	1,0
224	ASISTENT MEDICAL LICENTIIAT PR	S	1,0
225-229	ASISTENT MEDICAL PR	PL	5,0
230-231	ASISTENT MEDICAL	PL	2,0
232	ASISTENT MEDICAL DEB.	PL	1,0
233-235	INFIRMIERA	G	3,0
236	INFIRMIERA DEB.	G	1,0
237-241	INGRIJITOARE	G	5,0
<b>VIII. SECTIA NEONATOLOGIE - 40 paturi din care comp.prematuri - 10 paturi si comp.terapie intensiva - 8</b>			<b>73,0</b>
242	MEDIC SEF SECTIE, GR.II	S	1,0
243-247	MEDIC SPECIALIST	S	5,0
248-249	MEDIC REZIDENT AN V	S	2,0
250	ASISTENT MEDICAL LICENTIIAT PR. SEF	S	1,0
251-253	ASISTENT MEDICAL LICENTIIAT PR	S	3,0
254-269	ASISTENT MEDICAL PR	PL	16,0
270-273	ASISTENT MEDICAL	PL	4,0
274-295	ASISTENT MEDICAL DEB.	PL	22,0
296-305	INFIRMIERA	G	10,0
306	INFIRMIERA DEB.	G	1,0
307-314	INGRIJITOARE	G	8,0
<b>IX. SECTIA A.T.I. - 20 paturi</b>			<b>72,0</b>
315	MEDIC SEF SECTIE, GR.I	S	1,0
316-318	MEDIC PRIMAR	S	3,0
319-324	MEDIC SPECIALIST	S	6,0
325-327	MEDIC REZIDENT AN V	S	3,0
328	MEDIC REZIDENT AN IV	S	1,0
329	ASISTENT MEDICAL LICENTIIAT PR. SEF	S	1,0
330	ASISTENT MEDICAL LICENTIIAT PR.	S	1,0
331-355	ASISTENT MEDICAL PR	PL	25,0
356-360	ASISTENT MEDICAL	PL	5,0
361	ASISTENT MEDICAL DEB.	PL	1,0
362	REGISTRATOR MEDICAL	M	1,0
363-371	INFIRMIERA	G	9,0
372-377	INFIRMIERA DEB.	G	6,0
378-381	INGRIJITOARE	G	4,0

382-385	BRANCARDIER	G	4,0
386	SECRETAR	M	1,0
<b>X. SECTIA NEUROLOGIE - 59 paturi din care: comp.recuperare medicala neurologie - 9 paturi</b>			<b>73,0</b>
387	MEDIC SEF SECTIE, GR.II	S	1,0
388-391	MEDIC PRIMAR	S	4,0
392-393	MEDIC SPECIALIST	S	2,0
394	KINETOTERAPEUT PRINCIPAL	S	1,0
395	ASISTENT MEDICAL PR SEF	PL	1,0
396-397	ASISTENT MEDICAL LICENTIIAT PR.	S	2,0
398-409	ASISTENT MEDICAL PR	PL	12,0
410-414	ASISTENT MEDICAL	PL	5,0
415-424	ASISTENT MEDICAL DEB.	PL	10,0
425	REGISTRATOR MEDICAL	M	1,0
426-439	INFIRMIERA	G	14,0
440-452	INFIRMIERA DEB	G	13,0
453-456	INGRIJITOARE	G	4,0
457-459	BRANCARDIER	G	3,0
<b>XI. SECTIA MEDICINA INTERNA - 89 paturi din care comp.gastroenterologie - 15 paturi; comp.D.Z.N.B.M.-10 paturi; comp.reumatologie - 5 paturi; comp.nefrologie - 5</b>			<b>63,0</b>
460	MEDIC SEF SECTIE, GR.II	S	1,0
461-465	MEDIC PRIMAR	S	5,0
466-468	MEDIC SPECIALIST	S	3,0
469-470	MEDIC REZIDENT AN IV	S	2,0
471	ASISTENT MEDICAL PR SEF	PL	1,0
472	ASISTENT MEDICAL LICENTIIAT PR	S	1,0
473-492	ASISTENT MEDICAL PR	PL	20,0
493-495	ASISTENT MEDICAL	PL	3,0
498	ASISTENT MEDICAL DEB.	PL	3,0
499	REGISTRATOR MEDICAL PR.	M	1,0
500-510	INFIRMIERA	G	11,0
511-512	INFIRMIERA DEB.	G	2,0
513-522	INGRIJITOARE	G	10,0
<b>XII. SECTIA BOLI INFECTIOASE - 55 paturi din care comp.HIV SIDA - 5 paturi si comp.copii - 10 paturi</b>			<b>46,0</b>
523	MEDIC SEF SECTIE, GR.II	S	1,0
524-526	MEDIC PRIMAR	S	3,0
527	MEDIC SPECIALIST	S	1,0
528	ASISTENT MEDICAL LICENTIIAT PR. SEF	S	1,0
529-532	ASISTENT MEDICAL LICENTIIAT PR	S	4,0
533-545	ASISTENT MEDICAL PR.	PL	13,0
546-548	ASISTENT MEDICAL	PL	3,0
549	ASISTENT MEDICAL DEB.	PL	1,0
550	REGISTRATOR MEDICAL PR	M	1,0
551	REGISTRATOR MEDICAL	M	1,0
552-558	INFIRMIERA	G	7,0
559	INFIRMIERA DEB.	G	1,0
560-568	INGRIJITOARE	G	9,0
<b>XIII. SECTIA PSIHIATRIE - 80 paturi</b>			<b>68,0</b>
569	MEDIC SEF SECTIE, GR.II	S	1,0
570-572	MEDIC PRIMAR	S	3,0
573-574	MEDIC SPECIALIST	S	2,0
575	MEDIC REZIDENT AN V	S	1,0
576	MEDIC REZIDENT AN IV	S	1,0
577	PSIHOLOG PR	S	1,0



578	ASISTENT MEDICAL PR SEF	PL	1,0
579-600	ASISTENT MEDICAL PR	PL	22,0
601	ASISTENT MEDICAL	PL	1,0
602	ASISTENT SOCIAL PR.	PL	1,0
603	INSTRUCTOR ERGOTERAPEUT DEB	M	1,0
604	REGISTRATOR MEDICAL PR.	M	1,0
605	REGISTRATOR MEDICAL	M	1,0
606-616	INFIRMIERA	G	11,0
617	INFIRMIERA DEB.	G	1,0
618-626	INGRIJITOARE	G	9,0
627-630	BRANCARDIER	G	4,0
631-636	MUNCITOR NECALIFICAT	G	6,0
<b>XIV. SECTIA PNEUMOLOGIE - 88 paturi din care: comp.</b>			<b>74,0</b>
637	MEDIC SEF SECTIE, GR.II	S	1,0
638-642	MEDIC PRIMAR	S	5,0
643-646	MEDIC SPECIALIST	S	4,0
647	MEDIC REZIDENT AN III	S	1,0
648	ASISTENT MEDICAL LICENTIIAT PR. SEF	S	1,0
649-650	ASISTENT MEDICAL LICENTIIAT PR	S	2,0
651-675	ASISTENT MEDICAL PR	PL	25,0
676	REGISTRATOR MEDICAL DEB.	M	1,0
677-689	INFIRMIERA	G	13,0
690-709	INGRIJITOARE	G	20,0
710	BRANCARDIER	G	1,0
<b>XV. SECTIA PEDIATRIE - 54 paturi</b>			<b>51,0</b>
711	MEDIC SEF SECTIE, GR.II	S	1,0
712-716	MEDIC PRIMAR	S	5,0
717	MEDIC SPECIALIST	S	1,0
718	ASISTENT SOCIAL	S	1,0
719	ASISTENT MEDICAL LICENTIIAT PR. SEF	S	1,0
720-728	ASISTENT MEDICAL LICENTIIAT PR	S	9,0
728-742	ASISTENT MEDICAL PR	PL	14,0
743	ASISTENT MEDICAL	PL	1,0
744	REGISTRATOR MEDICAL	M	1,0
745-752	INFIRMIERA	G	8,0
753-760	INGRIJITOARE	G	9,0
<b>XVI. SECTIA CARDIOLOGIE - 26 paturi</b>			<b>26,0</b>
762	MEDIC SEF SECTIE, GR.I	S	1,0
763-764	MEDIC SPECIALIST	S	2,0
765	MEDIC REZIDENT AN VI	S	1,0
766	MEDIC REZIDENT AN V	S	1,0
767	ASISTENT MEDICAL PR SEF	PL	1,0
768-777	ASISTENT MEDICAL PR	PL	10,0
787-782	INFIRMIERA	G	5,0
783-787	INGRIJITOARE	G	5,0
<b>XVII. COMPARTIMENTUL DERMATOVENEROLOGIE - 16</b>			<b>16,0</b>
788-790	MEDIC PRIMAR	S	3,0
791	MEDIC SPECIALIST	S	1,0
792-797	ASISTENT MEDICAL PR	PL	6,0
798-800	INFIRMIERA	G	3,0
801-803	INGRIJITOARE	G	3,0
<b>XVIII. COMPARTIMENTUL ONCOLOGIE MEDICALA - 20 paturi din care comp.hematologie - 5 paturi</b>			<b>22,0</b>
804	MEDICI SPECIALIST	S	1,0
805	MEDIC REZIDENT AN V	S	1,0
806	MEDIC REZIDENT AN III	S	1,0
807-810	ASISTENT MEDICAL PR	PL	4,0
811-812	ASISTENT MEDICAL	PL	2,0
813-814	ASISTENT MEDICAL DEB.	PL	2,0
815	REGISTRATOR MEDICAL DEB.	M	1,0
816-818	INFIRMIERA	G	3,0
819-824	INGRIJITOARE	G	6,0
825	BRANCARDIER	G	1,0

<b>XIX. COMPARTIMENTUL RECUPERARE, MEDICINA FIZICA SI BALNEOLOGIE - 16 paturi</b>		<b>0</b>	<b>24,0</b>
826-827	MEDIC SPECIALIST	S	2,0
828	KINETOTERAPEUT	S	1,0
829-838	ASISTENT MEDICAL PR	PL	10,0
839	REGISTRATOR MEDICAL PR.	M	1,0
840-847	INFIRMIERA	G	8,0
848-849	INGRIJITOARE	G	2,0
<b>XX. BLOC OPERATOR CENTRAL</b>			<b>70,0</b>
850	ASISTENT MEDICAL LICENTIIAT PR SEF	S	1,0
851-854	ASISTENT MEDICAL LICENTIIAT PR	S	4,0
855-876	ASISTENT MEDICAL PR	PL	22,0
877-878	ASISTENT MEDICAL	PL	2,0
879-880	ASISTENT MEDICAL DEBUTANT	PL	2,0
881-889	INFIRMIERA	G	9,0
890-901	INFIRMIERA DEB.	G	12,0
902-909	INGRIJITOARE	G	8,0
910-919	BRANCARDIER	G	10,0
<b>XXI. SALA OPERATII OFTALMOLOGIE</b>			<b>3,0</b>
920-921	ASISTENT MEDICAL PR	PL	2,0
922	INFIRMIERA DEB.	G	1,0
<b>XXII. U.T.S.</b>			<b>11,0</b>
923-924	ASISTENT MEDICAL LICENTIIAT PR.	S	2,0
925-928	ASISTENT MEDICAL PR	PL	4,0
929	ASISTENT MEDICAL	PL	1,0
930	ASISTENT MEDICAL DEB	PL	1,0
931-933	INGRIJITOARE	G	3,0
<b>XXIII. LABORATOR ANALIZE MEDICALE CU PUNCT DE LUCRU IN AMBULATORIUL INTEGRAT</b>			<b>51,0</b>
934	MEDIC SEF LABORATOR, GR.II	S	1,0
935	MEDIC PRIMAR	S	1,0
936-937	MEDIC SPECIALIST	S	2,0
938	MEDIC REZIDENT AN IV	S	1,0
939	MEDIC REZIDENT AN V	S	1,0
940-941	BIOLOG PR	S	2,0
940	BIOLOG SPECIALIST	S	1,0
942-948	CHIMIST PR	S	6,0
949	CHIMIST SPECIALIST	S	1,0
950-952	CHIMIST	S	3,0
953	CHIMIST DEB.	S	1,0
954	BIOLOG DEB.	S	1,0
955	ASISTENT MEDICAL PR SEF	PL	1,0
956-972	ASISTENT MEDICAL PR	PL	17,0
973-977	ASISTENT MEDICAL	PL	5,0
978-979	ASISTENT MEDICAL DEB.	PL	2,0
980	REGISTRATOR MEDICAL PR	M	1,0
981-984	INGRIJITOARE	G	4,0
<b>XXIV. LABORATOR BACTERIOLOGIE BK</b>			<b>11,0</b>
985	MEDIC SEF LABORATOR, GR.I	S	1,0
986	MEDIC SPECIALIST	S	1,0
987	BIOLOG SPECIALIST	S	1,0
988	BIOLOG	S	1,0
989	BIOLOG DEBUTANT	S	1,0
990-994	ASISTENT MEDICAL PR	PL	5,0
995	INGRIJITOARE	G	1,0
<b>XXV. LABORATOR RADIOLOGIE SI IMAGISTICA MEDICALA - Compartiment CT</b>			<b>33,0</b>
996	MEDIC SEF LABORATOR, GR.II	S	1,0
997-999	MEDIC SPECIALIST	S	3,0
1000-1001	MEDIC REZIDENT AN V	S	2,0
1002	FIZICIAN SPECIALIST	S	1,0
1003	ASISTENT MEDICAL PR SEF	PL	1,0
1004	ASISTENT MEDICAL LICENTIIAT PR.	S	1,0
1005-1015	ASISTENT MEDICAL PR	PL	11,0
1016-1021	ASISTENT MEDICAL	PL	6,0

1022	ASISTENT MEDICAL DEBUTANT	PL	1,0
1023	REGISTRATOR MEDICAL PR.	G	1,0
1024-1028	INGRIJITOARE	G	5,0
<b>XXVI. LABORATOR EXPLORARI FUNCTIONALE</b>			<b>3,0</b>
1029	MEDIC SPECIALIST	S	1,0
1030	ASISTENT MEDICAL PR	PL	1,0
1031	ASISTENT MEDICAL	PL	1,0
<b>XXVII. LABORATOR RECUPERARE, MEDICINA FIZICA SI</b>			<b>8,0</b>
1032	MEDIC SEF LABORATOR, GR.I	S	1,0
1033	MEDIC SPECIALIST	S	1,0
1034	PROFESOR CFM	S	1,0
1035-1038	ASISTENT MEDICAL PR	PL	4,0
1039	INGRIJITOARE	G	1,0
<b>XXVIII. LABORATOR ENDOSCOPIE DIGESTIVA</b>			<b>3,0</b>
1040	ASISTENT MEDICAL LICENTAT PR.	S	1,0
1041	ASISTENT MEDICAL PR	PL	1,0
1042	INGRIJITOARE	G	1,0
<b>XXIX. CAMERA DE GARDA BOLI INFECTIOASE</b>			<b>5,0</b>
1043	ASISTENT MEDICAL PR	PL	1,0
1044-1045	ASISTENT MEDICAL	PL	2,0
1046-1047	ASISTENT MEDICAL DEB.	PL	2,0
<b>XXX. CAMERA DE GARDA PSIHIARIE</b>			<b>5,0</b>
1048	ASISTENT MEDICAL	S	1,0
1049	ASISTENT MEDICAL PR.	PL	1,0
1050	ASISTENT MEDICAL	PL	1,0
1051-1052	ASISTENT MEDICAL DEB.	PL	2,0
<b>XXXI. COMPARTAMENT ENDOSCOPIE BRONSICA</b>			<b>4,0</b>
1053	ASISTENT MEDICAL LICENTAT PR	S	1,0
1051-1055	ASISTENT MEDICAL PR	PL	2,0
1056	INGRIJITOARE	G	1,0
<b>XXXII. SERVICIUL DE PREVENIRE A INFECTIILOR ASOCIATE ASISTENTEI MEDICALE</b>			<b>8,0</b>
1057	MEDIC PRIMAR	S	1,0
1058	MEDIC SPECIALIST	S	1,0
1059	MEDIC REZIDENT AN III	S	1,0
1060-1061	ASISTENT MEDICAL LICENTAT PR	S	2,0
1062	ASISTENT MEDICAL PR	PL	1,0
1063-1064	AGENT DDD	G	2,0
<b>XXXIII. SERVICIUL DE ANATOMIE PATOLOGICA cu comp. citologie, comp. histopatologie, comp. prosectura)</b>			<b>20,0</b>
1065	MEDIC SEF SERVICIU, GR.II	S	1,0
1066-1067	MEDIC PRIMAR	S	2,0
1068	MEDIC SPECIALIST	S	1,0
1069-1072	ASISTENT MEDICAL PR	PL	4,0
1073-1076	ASISTENT MEDICAL	PL	4,0
1077-1080	ASISTENT MEDICAL DEB.	PL	4,0
1081-1082	INGRIJITOARE	G	2,0
1083-1084	AUTOPSIER PRINCIPAL	M	2,0

<b>XXXIV. STERILIZARE</b>			<b>41,0</b>
1085	ASISTENT MEDICAL PR SEF	PL	1,0
1086	ASISTENT MEDICAL LICENTIIAT PR	S	1,0
1087-1090	ASISTENT MEDICAL PR	PL	4,0
1091-1092	INGRIJITOARE	G	2,0
<b>XXXV. FARMACII CU CIRCUIT INCHIS</b>			<b>33,0</b>
<b>FARMACIA NR. 1</b>			<b>18,0</b>
1093	FARMACIST SEF SECTIE, GR.II	S	1,0
1094	FARMACIST	S	1,0
1095-1103	ASISTENT MEDICAL PR	PL	9,0
1104-1105	ASISTENT MEDICAL	PL	2,0
1106	ASISTENT MEDICAL DEB.	PL	1,0
1107-1109	INGRIJITOARE	G	3,0
1110	OPERATOR CONTROLOR DATE III	M	1,0
<b>FARMACIA NR. 2</b>			<b>8,0</b>
1111	FARMACIST SEF SECTIE, GR.I	S	1,0
1112	FARMACIST	S	1,0
1113-1116	ASISTENT MEDICAL PR	PL	4,0
1117-1118	INGRIJITOARE	G	2,0
<b>FARMACIA NR. 3</b>			<b>7,0</b>
1119	FARMACIST REZIDENT AN.III	S	1,0
1120	FARMACIST SPECIALIST	S	1,0
1121-1124	ASISTENT MEDICAL PR	PL	4,0
1125	INGRIJITOARE	G	1,0
<b>XXXVI. CABINET DIABET ZAHARAT, NUTRITIE SI BOLI METABOLICE - EDUCATIE SPECIFICA</b>			<b>6,0</b>
1126	MEDIC PRIMAR	S	1,0
1127	MEDIC REZIDENT AN III	S	1,0
1128-1130	ASISTENT MEDICAL PR	PL	3,0
1131	INGRIJITOARE	G	1,0
<b>XXXVII. CABINET DIABET ZAHARAT, NUTRITIE SI BOLI</b>			<b>2,0</b>
1132	MEDIC SPECIALIST	S	1,0
1133	ASISTENT MEDICAL PR	PL	1,0
<b>XXXVIII. CABINET PLANIFICARE FAMILIALA</b>			<b>4,0</b>
1134	MEDIC PRIMAR	S	1,0
1135	MEDIC SPECIALIST	S	1,0
1136-1137	ASISTENT MEDICAL PR	PL	2,0
<b>XXXIX. CABINET ONCOLOGIE MEDICALA</b>			<b>5,0</b>
1138	MEDIC PRIMAR	S	1,0
1139	MEDIC SPECIALIST	S	1,0
1140-1141	ASISTENT MEDICAL PR	PL	2,0
1142	REGISTRATOR MEDICAL PR.	M	1,0
<b>XL. CABINET BOLI INFECTIOASE</b>			<b>4,0</b>
1143-1144	MEDIC SPECIALIST	S	2,0
1145	ASISTENT MEDICAL PR	PL	1,0
1146	ASISTENT MEDICAL	PL	1,0
<b>XLI. CABINET ASISTENTA SOCIALA</b>			<b>1,0</b>
1147	ASISTENTA SOCIALA PR.	S	1,0
<b>XLII. SERVICIUL EVALUARE, STATISTICA MEDICALA SI</b>			<b>5,0</b>
1148	BIOINGINER MEDICAL SPECIALIST	S	1,0
1149	ASISTENT MEDICAL LICENTIIAT PR	S	1,0
1150	ASISTENT MEDICAL PR	PL	1,0
1151	ANALIST PROGRAMATOR I	S	1,0
1152	STATISTICIAN PR	M	1,0
<b>XLIII. SERVICIUL DE INTERNARI SI RELATII CU</b>			<b>3,0</b>
1153-1154	REGISTRATOR MEDICAL PR	M	2,0
1155	REGISTRATOR MEDICAL	M	1,0

<b>XLIV. BUCATARIE DIETETICA</b>			<b>2,0</b>
1156-1157	ASISTENT MEDICAL	PL	2,0
<b>XLV. SPALATORIE</b>			<b>22,0</b>
1158-1159	SPALATOREASA CU GESTIUNE	G	2,0
1160-1179	SPALATOREASA	G	20,0
<b>XLVI. COMPARTIMENT RELATII CU PUBLICUL</b>			<b>1,0</b>
1180	REFERENT TR. IA	M	1,0
<b>XLVII. COMPARTIMENTUL SECURITATEA MUNCII, PSI, PROTECTIE CIVILA SI SITUATII DE URGENTA</b>			<b>3,0</b>
1181	REFERENT DE SPECIALITATE GR.II	S	1,0
1182	REFERENT DEBUTANT	M	1,0
1183	MUNCITOR TR.I.	PR	1,0
<b>XLVIII. SERVICIUL R.U.O.N.S.</b>			<b>10,0</b>
1184	SEF SERV. GR.II	S	1,0
1185	ECONOMIST GR.IA	S	1,0
1186	ECONOMIST GR.I	S	1,0
1187	ECONOMIST GR.II	S	1,0
1188	REFERENT DE SPECIALITATE GR.II	S	1,0
1189-1190	REFERENT DE SPECIALITATE GR.III	S	2,0
1191-1192	REFERENT TR. IA	M	2,0
1193	OPERATOR CONTROLOR DATE TR.I	M	1,0
<b>XLIX. SERVICIUL ADMINISTRATIV CU UN BIROU ADMINISTRATIV, UN COMPARTIMENT APROVIZIONARE TRANSPORT SI UN COMPARTIMENT TEHNIC</b>			<b>15,0</b>
1194	SEF SERVICIU GR.II	S	1,0
1195	SEF BIROU, GR.II	S	1,0
1196	SEF ATELIER INTRETINERE SI REPARATII, GR.II	SSD	1,0
1197	BIOINGINER MEDICAL SPECIALIST	S	1,0
1198	TEHNICIAN PR.SANITAR	PL	1,0
1199	DACTILOGRAF TR. I	M	1,0
1200-1202	FUNCTIONAR	M	3,0
1203	SECRETAR DACTILOGRAF TR. IA	M	1,0
1204	ARHIVAR	M	1,0
1205-1206	SEF DEPOZIT GR.I.	M	2,0
1207	MERCEOLOG TR. IA	M	1,0
1208	MAGAZINER	M	1,0
<b>L. BIROUL DE ACHIZITII PUBLICE, CONTRACTARI</b>			<b>6,0</b>
1209	SEF BIROU GR.II	S	1,0
1210	ECONOMIST GR. IA	S	1,0
1211	ECONOMIST GR.I	S	1,0
1212	REFERENT DE SPECIALITATE GR.II	S	1,0
1213	INGINER GR.II	S	1,0
1214	REFERENT TR. IA	M	1,0
<b>LI. BIROU CONTABILITATE</b>			<b>6,0</b>
1215	SEF BIROU GR.II	S	1,0
1216-1218	ECONOMIST GR. IA	S	3,0
1219	ECONOMIST GR.II	S	1,0
1220	CONTABIL TR. IA	M	1,0
<b>LII. BIROU FINANCIAR</b>			<b>5,0</b>
1221	SEF BIROU GR. II	S	1,0
1222	ECONOMIST GR. IA	S	1,0
1223-1224	CONTABIL TR. IA	M	2,0
1225	CASIER	M	1,0
<b>LIII. PERSONAL CLERICAL</b>			<b>1,0</b>
1226	PREOT DEFINITIV	S	1,0
<b>LIV. COMPARTIMENT AUDIT</b>			<b>1,0</b>
1227	AUDITOR GR. I	S	1,0

<b>LV. COMPARTIMENTUL INFORMATICA</b>			<b>3,0</b>
1228	INFORMATICIAN GR. III	SSD	1,0
1229	INGINER DE SISTEM GR.IA	S	1,0
1230	OPERATOR CONTROLOR DATE TR.II	M	1,0
<b>LVI. COMPARTIMENTUL JURIDIC</b>			<b>2,0</b>
1231	CONSILIER JURIDIC GR.IA	S	1,0
1232	CONSILIER JURIDIC GR.I	S	1,0
<b>LVII. SERVICIUL DE MANAGEMENT AL CALITATII</b>			<b>8,0</b>
1233	SEF SERVICIU GR.I	S	1,0
1234	MEDIC SPECIALIST	S	1,0
1235	ASISTENT MEDICAL LICENTIAT PR	S	1,0
1236	ASISTENT MEDICAL DEB.	S	1,0
1237-1238	ECONOMIST GR. II	S	2,0
1239	BIOINGINER MEDICAL SPECIALIST	S	1,0
1240	CONSILIER JURIDIC DEBUTANT	S	1,0
<b>LVIII. MUNCITORI</b>			<b>123,0</b>
<b>ZIDARI</b>			<b>3,0</b>
1241	MUNCITOR CALIFICAT TR.III		1,0
1242-1243	MUNCITOR CALIFICAT TR.IV		2,0
<b>TIMPLARI</b>			<b>3,0</b>
1244-1245	MUNCITOR CALIFICAT TR.III		2,0
1246	MUNCITOR CALIFICAT TR.IV		1,0
<b>LACATUSI MECANICI</b>			<b>6,0</b>
1247	SEF ECHIPA		1,0
1248	MUNCITOR CALIFICAT TR.I		1,0
1249-1251	MUNCITOR CALIFICAT TR.II		3,0
1252	MUNCITOR CALIFICAT TR.III		1,0
<b>ELECTRICIENI - INTRETINERE, DESERVIRE GRUP ELECTROGEN</b>			<b>10,0</b>
1253	SEF ECHIPA		1,0
1254-1257	MUNCITOR CALIFICAT TR.II		4,0
1258	MUNCITOR CALIFICAT TR.III		1,0
1259-1262	MUNCITOR CALIFICAT TR.IV		4,0
<b>DESERVIRE CENTRALA TERMICA I</b>			<b>10,0</b>
1263	SEF ECHIPA		1,0
1264	MUNCITOR CALIFICAT TR.I		1,0
1265-1267	MUNCITOR CALIFICAT TR.II		3,0
1268-1270	MUNCITOR CALIFICAT TR.III		3,0
1271-1272	MUNCITOR CALIFICAT TR.IV		2,0
<b>DESERVIRE CENTRALA TERMICA II</b>			<b>9,0</b>
1273-1274	MUNCITOR CALIFICAT TR.I		2,0
1275-1276	MUNCITOR CALIFICAT TR.II		2,0
1277-1278	MUNCITOR CALIFICAT TR.III		2,0
1279-1281	MUNCITOR CALIFICAT TR.IV		3,0
<b>INSTALATORI - INTRETINERE, DESERVIRE STATIE DE OXIGEN, STATIE POMPE APA POTABILA</b>			<b>15,0</b>
1282	SEF ECHIPA		1,0
1283-1288	MUNCITOR CALIFICAT TR.I		6,0
1289-1291	MUNCITOR CALIFICAT TR.II		3,0
1292-1295	MUNCITOR CALIFICAT TR.III		4,0
1296	MUNCITOR CALIFICAT TR.IV		1,0
<b>DESERVIRE LIFTURI</b>			<b>9,0</b>
1297-1305	MUNCITOR CALIFICAT TR.IV		9,0
<b>INTRETINERE INVENTAR MOALE</b>			<b>4,0</b>
1306-1309	MUNCITOR CALIFICAT TR.II		4,0
<b>FRIZERIE</b>			<b>2,0</b>
1310-1311	MUNCITOR CALIFICAT TR.IV		2,0
<b>CENTRALA TELEFONICA</b>			<b>5,0</b>
1312-1316	MUNCITOR CALIFICAT TR.III		5,0
<b>INTRETINERE SPATII VERZI-DESERVIRE CREMATORIU</b>			<b>9,0</b>
1317	MUNCITOR CALIFICAT TR.III		1,0
1318-1325	MUNCITOR NECALIFICAT TR I		8,0

	<b>ACTIVITATE CONDUCERE AUTO</b>		<b>10,0</b>
1326-1330	SOFER TR I		5,0
1331-1335	SOFER TR. II		5,0
	<b>GARDEROBA</b>		<b>4,0</b>
1336-1339	GARDEROBIERA	M.G	4,0
	<b>BLOCURI ALIMENTARE - BUCATARI</b>		<b>9,0</b>
1340-1344	MUNCITOR CALIFICAT TR.II		5,0
1345	MUNCITOR CALIFICAT TR.III		1,0
1346-1348	MUNCITOR CALIFICAT TR.IV		3,0
	<b>MUNCITORI NECALIFICATI BUCATARIE</b>		<b>11,0</b>
1349-1359	MUNCITOR NECALIFICAT II		11,0
	<b>MUNCITORI APROVIZIONARE</b>		<b>4,0</b>
1360-1363	MUNCITOR NECALIFICAT II		4,0
	<b>LIX. AMBULATORIU INTEGRAT CU CABINETE IN</b>		<b>71,0</b>
	<b>CABINET MEDICINA INTERNA</b>		<b>2,0</b>
1364-1365	ASISTENT MEDICAL PR	PL	2,0
	<b>CABINET CARDIOLOGIE</b>		<b>2,0</b>
1366-1367	ASISTENT MEDICAL DEB.	PL	2,0
	<b>CABINET CARDIOLOGIE PEDIATRICA</b>		<b>4,0</b>
1368	MEDIC SPECIALIST	S	1,0
1369	MEDIC REZIDENT AN V	S	1,0
1370-1371	ASISTENT MEDICAL DEB.	PL	2,0
	<b>SALA TRATAMENT</b>		<b>1,0</b>
1372	ASISTENT MEDICAL	PL	1,0
	<b>CABINET O.R.L.</b>		<b>2,0</b>
1373	ASISTENT MEDICAL PR	PL	1,0
1374	ASISTENT MEDICAL	PL	1,0
	<b>CABINET AUDIOLOGIE</b>		<b>2,0</b>
1375	ASISTENT MEDICAL PR	PL	1,0
1376	ASISTENT MEDICAL	PL	1,0
	<b>CABINET MEDICINA MUNCII</b>		<b>4,0</b>
1377-1378	MEDIC SPECIALIST	S	2,0
1379-1380	ASISTENT MEDICAL PR	PL	2,0
	<b>CABINET OFTALMOLOGIE</b>		<b>2,0</b>
1381-1382	ASISTENT MEDICAL PR	PL	2,0
	<b>CABINET ENDOCRINOLOGIE</b>		<b>4,0</b>
1383	MEDIC PRIMAR	S	1,0
1384	MEDIC REZIDENT AN V	S	1,0
1385-1386	ASISTENT MEDICAL DEB	PL	2,0
	<b>CABINET OBSTETRICA GINECOLOGIE</b>		<b>2,0</b>
1387	ASISTENT MEDICAL LICENTIAT PR	S	1,0
1388	ASISTENT MEDICAL PR	PL	1,0
	<b>CABINET NEUROLOGIE</b>		<b>2,0</b>
1389-1390	ASISTENT MEDICAL PR	PL	2,0
	<b>CABINET ORTOPEDIE SI TRAUMATOLOGIE</b>		<b>2,0</b>
1391-1392	ASISTENT MEDICAL PR	PL	2,0
	<b>CABINET DERMATOVENEROLOGIE</b>		<b>2,0</b>
1393-1394	ASISTENT MEDICAL PR	PL	2,0
	<b>CABINET UROLOGIE</b>		<b>3,0</b>
1395	MEDIC SPECIALIST	S	1,0
1396-1397	ASISTENT MEDICAL PR	PL	2,0
	<b>CABINET CHIRURGIE PEDIATRICA</b>		<b>2,0</b>
1395-1399	ASISTENT MEDICAL PR	PL	2,0

	<b>CABINET CHIRURGIE GENERALA</b>		<b>2,0</b>
1400	ASISTENT MEDICAL PR	PL	1,0
1401	ASISTENT MEDICAL	PL	1,0
	<b>CABINET PEDIATRIE</b>		<b>3,0</b>
1402-1403	ASISTENT MEDICAL PR	PL	2,0
1404	ASISTENT MEDICAL	PL	1,0
	<b>CABINET REUMATOLOGIE</b>		<b>2,0</b>
1405	MEDIC SPECIALIST	S	1,0
1406	ASISTENT MEDICAL	PL	1,0
	<b>CABINET PNEUMOLOGIE</b>		<b>2,0</b>
1407	ASISTENT MEDICAL PR	PL	1,0
1408	ASISTENT MEDICAL	PL	1,0
	<b>CABINET RECUPERARE, MEDICINA FIZICA SI BALNEOLOGIE</b>		<b>2,0</b>
1409-1410	ASISTENT MEDICAL	PL	2,0
	<b>PUNCT DE LUCRU AL LABORATORULUI DE ANALIZE MEDICALE AL SPITALULUI</b>		<b>2,0</b>
1411-1412	ASISTENT MEDICAL PR	PL	2,0
	<b>CABINET NEFROLOGIE</b>		<b>2,0</b>
1413	MEDIC SPECIALIST	S	1,0
1414	ASISTENT MEDICAL	PL	1,0
	<b>CABINET ALERGOLOGIE SI IMUNOLOGIE CLINICA</b>		<b>2,0</b>
1415	MEDIC SPECIALIST	S	1,0
1416	ASISTENT MEDICAL PR.	PL	1,0
	<b>LABORATOR RECUPERARE, MEDICINA FIZICA SI BALNEOLOGIE</b>		<b>3,0</b>
1417-1419	ASISTENT MEDICAL PR	PL	3,0
	<b>LABORATOR RADIOLOGIE SI IMAGISTICA MEDICALA</b>		<b>2,0</b>
1420-1421	ASISTENT MEDICAL PR	PL	2,0
	<b>LABORATOR DE EXPLORARI FUNCTIONALE</b>		<b>2,0</b>
1422-1423	ASISTENT MEDICAL PR	PL	2,0
	<b>STERILIZARE</b>		<b>2,0</b>
1424-1425	ASISTENT MEDICAL	PL	2,0
	<b>COMPARTIMENT STATISTICA MEDICALA</b>		<b>2,0</b>
1426-1427	STATISTICIAN PR	M	2,0
	<b>FISIERE</b>		<b>2,0</b>
1428-1429	REGISTRATOR MEDICAL PR	M	2,0
	<b>PERSONAL CURATENIE</b>		<b>5,0</b>
1430-1434	INGRIJITOARE	G	5,0
	<b>LX. UNITATE PRIMIRE URGENTE - SMURD cu Cabinet Medicina Dentara de Urgenta</b>		<b>105,0</b>
1435	MEDIC SEF SECTIE, GR.II	S	1,0
1436-1437	MEDIC PRIMAR	S	2,0
1438-1444	MEDIC SPECIALIST	S	7,0
1445	MEDIC	S	1,0
1446-1450	MEDIC REZIDENT AN V	S	5,0
1451-1452	ASISTENT SOCIAL PR.	S	2,0
1453-1454	ASISTENT SOCIAL	S	2,0
1455	ASISTENT SOCIAL DEBUTANT	S	1,0
1456	ASISTENT MEDICAL PR SEF	PL	1,0
1457-1488	ASISTENT MEDICAL PR	PL	32,0
1489-1501	ASISTENT MEDICAL	PL	13,0
1502	ASISTENT MEDICAL DEBUTANT	PL	1,0
1503-1504	REGISTRATOR MEDICAL PR.	M	2,0
1505-1506	REGISTRATOR MEDICAL	M	2,0
1507	REGISTRATOR MEDICAL DEB.	M	1,0
1508-1519	INFIRMIERA	G	12,0
1520-1526	INGRIJITOARE	G	7,0
1527-1538	BRANCARDIER	G	12,0
1539	SECRETAR DACTILOGRAF TR.I	M	1,0



<b>LXI. CENTRUL DE SANATATE MINTALA</b>			<b>8,0</b>
1540	MEDIC SEF CENTRU GR I	S	1,0
1541	MEDIC SPECIALIST	S	1,0
1542	PSIHOLOG SPECIALIST	S	1,0
1543	PSIHOLOG PRACTICANT	S	1,0
1544	SOCIOLOG PR.	S	1,0
1545-1546	ASISTENT MEDICAL PR	PL	2,0
1547	REGISTRATOR MEDICAL PR.	M	1,0
<b>LXII. CENTRUL DE SANATATE MINTALA - COPII</b>			<b>7,0</b>
1548	MEDIC PRIMAR	S	1,0
1549	MEDIC REZIDENT AN III	S	1,0
1550	LOGOPED PRINCIPAL	S	1,0
1551	PSIHOLOG STAGIAR	S	1,0
1552	ASISTENT MEDICAL PR	PL	1,0
1553	SOCIOLOG DEBUTANT	S	1,0
1554	ASISTENT MEDICAL	PL	1,0
<b>LXIII. CABINET MEDICINA SPORTIVA</b>			<b>3,0</b>
1555	MEDIC SPECIALIST	S	1,0
1556	PROFESOR PR	S	1,0
1557	ASISTENT MEDICAL PR	PL	1,0
<b>LXIV. DISPENSAR T.B.C. cu radiologie, cab. consultatii, cab. asistente teren, registratura si fisier</b>			<b>14,0</b>
1558	MEDIC PRIMAR	S	1,0
1559-1560	MEDIC SPECIALIST	S	2,0
1561	ASISTENT MEDICAL LICENTIIAT PR	S	1,0
1562-1567	ASISTENT MEDICAL PR	PL	6,0
1568	REGISTRATOR MEDICAL PR	M	1,0
1569-1570	INGRIJITOARE	G	2,0
1571	SOFER TR. II	M	1,0
<b>LXV. DISPENSAR T.B.C. NEGRESTI</b>			<b>4,0</b>
1572	MEDIC SPECIALIST	S	1,0
1573	ASISTENT MEDICAL LICENTIIAT PR	S	1,0
1574	ASISTENT MEDICAL PR.	PL	1,0
1575	INGRIJITOARE	G	1,0
<b>LXVI. SERVICIUL JUDETEAN DE MEDICINA LEGALA</b>			<b>31,0</b>
1576	MEDIC SEF SERV, GR.II	S	1,0
1577-1578	MEDIC PRIMAR	S	2,0
1579-1580	MEDIC SPECIALIST	S	2,0
1581	MEDIC REZIDENT AN V	S	1,0
1582	BIOLOG	S	1,0
1583-1584	CHIMIST PR	S	2,0
1585	PSIHOLOG	S	1,0
1586-1590	ASISTENT MEDICAL PR	PL	5,0
1591-1592	ASISTENT MEDICAL	PL	2,0
1593-1594	ASISTENT MEDICAL DEB.	PL	2,0
1595-1596	AUTOPSIER PRINCIPAL	M	2,0
1597-1598	AUTOPSIER	M	2,0
1599	AUTOPSIER DEB.	M	1,0
1600-1604	INGRIJITOARE	G	5,0
1605-1606	BRANCARDIER	G	2,0
<b>LXVII. COMPARTIMENT MEDICI REZIDENTI- MEDICINA</b>			<b>2,0</b>
1607-1608	MEDIC REZIDENT AN II	S	2,0
<b>TOTAL</b>			<b>1608,0</b>