

ROMÂNIA
JUDEȚUL VASLUI
CONSILIUL JUDEȚEAN

HOTĂRÂREA Nr. 268/2016

pentru modificarea anexelor la Hotărârea Consiliului Județean Vaslui nr. 249/2016 privind modificarea structurii organizatorice, a organigramei și a statului de funcții al personalului din cadrul Spitalului Județean de Urgență Vaslui

având în vedere:

- expunerea de motive a Președintelui Consiliului Județean Vaslui privind modificarea anexelor la Hotărârea Consiliului Județean Vaslui nr. 249/2016;
- adresa Ministerului Sănătății nr. XI/A/61225/05.12.2016;
- adresele Spitalului Județean de Urgență Vaslui nr. 15945/2016 și nr. 16004/2016;

în conformitate cu dispozițiile:

- Ordonanței de Urgență a Guvernului nr.162/2008 privind transferul ansamblului de atribuții și competențe exercitate de Ministerul Sănătății Publice către autoritățile administrației publice locale, cu modificările și completările ulterioare;

- Hotărârii Guvernului nr. 56/2009 pentru aprobarea Normelor metodologice de aplicare a Ordonanței de urgență a Guvernului nr. 162/2008;

în temeiul art. 91 alin (1), lit. a) și alin.(2), lit. c) și al art. 97 alin. (1) din Legea nr. 215/2001 privind administrația publică locală, republicată, cu modificările și completările ulterioare;

Consiliul Județean Vaslui

HOTĂRĂȘTE:

Art. I. – Se aprobă modificarea anexei nr. 1 la Hotărârea Consiliului Județean Vaslui nr. 249/2016 privind modificarea structurii organizatorice, a organigramei și a statului de funcții al personalului din cadrul Spitalului Județean de Urgență Vaslui și se înlocuiește cu anexa nr. 1 care face parte integrantă din prezenta hotărâre.

Art. II. – Se aprobă modificarea anexei nr. 2 la Hotărârea Consiliului Județean Vaslui nr. 249/2016 privind modificarea structurii organizatorice, a organigramei și a statului de funcții al personalului din cadrul Spitalului Județean de Urgență Vaslui și se înlocuiește cu anexa nr. 2 care face parte integrantă din prezenta hotărâre.

Art. III. – (1) Se aprobă transformarea a 2 (două) posturi de **asistent medical debutant în asistent medical.**

(2) Se aprobă transformarea unui post de **medic rezident anul I în medic rezident anul II.**

(3) Se aprobă transformarea a 2 (două) posturi de **medic rezident anul III în medic rezident anul IV.**

(4) Se aprobă transformarea unui post de **asistent social gradul principal în asistent social gradul debutant**

(5) Se aprobă modificarea anexei nr. 3 la Hotărârea Consiliului Județean Vaslui nr. 249/2016 privind modificarea structurii organizatorice, a organigramei și a statului de funcții al personalului din cadrul Spitalului Județean de Urgență Vaslui și se înlocuiește cu anexa nr. 3 care face parte integrantă din prezenta hotărâre.

Art. IV. – Aducerea la îndeplinire a prezentului act administrativ revine Spitalului Județean de Urgență Vaslui.

Vaslui, 22 decembrie 2016

PREȘEDINTE,
Dumitru Buzatu



Contrasemnează:
Secretarul județului Vaslui
Diana-Elena Ursulescu

A handwritten signature in black ink, corresponding to the name Diana-Elena Ursulescu mentioned in the text next to it.

**STRUCTURA ORGANIZATORICA A SPITALULUI
JUDEȚEAN DE URGENTA VASLUI**

aprobata prin OMS nr.837/02.06.2010 modificat prin OMS nr. 1060/22.07.2010
cu modificările și completările ulterioare prin Hotărâri ale Consiliului Județean Vaslui
in baza avizelor MS:

nr. XI/A/700004/CSA/19.01.2011
nr. XI/A/10198/CSA/2737/15.3.2011
nr. XI/A/25399/CSA/05.05.2011
XI/A/43289,54824/RL/1377/5.10.2011
nr. XI/A67830/RL/4207/19.12.2011
NR. XI/A/25068,27588/EN/4521/30.04.2013
NR. XI/A/61225/VVV/5597/01.11.2016
ADRESA NR. XI/A/61225/05.12.2016

- Secția medicina internă		89 paturi
din care:		
- compartiment gastroenterologie	15 paturi	
- compartiment diabet zaharat, nutriție și boli metabolice	10 paturi	
- compartiment reumatologie	5 paturi	
- compartiment nefrologie	5 paturi	
- Secția cardiologie		26 paturi
- Secția chirurgie generală		74 paturi
din care:		
- compartiment neurochirurgie	5 paturi	
- compartiment urologie	7 paturi	
- Secția chirurgie și ortopedie infantilă		25 paturi
- Secția ortopedie și traumatologie		25 paturi
- Secția obstetrică-ginecologie		55 paturi
- Secția neonatologie		40 paturi
din care:		
- compartiment prematuri	10 paturi	
- compartiment terapie intensivă	8 paturi	
- Secția neurologie		59 paturi
- compartiment recuperare medicală neurologie	9 paturi	
- Compartiment oftalmologie		20 paturi
- Secția ORL		25 paturi
din care:		
- chirurgie orală și maxilo-facială	5 paturi	
- Secția pediatrie		54 paturi
- Secția ATI		20 paturi
- Secția pneumologie		88 paturi
din care:		
- compartiment TBC	50 paturi	
- Compartiment oncologie medicală		20 paturi*
din care:		
- compartiment hematologie	5 paturi	
- Compartiment recuperare, medicină fizică și balneologie		16 paturi
- Compartiment dermatovenerologie		16 paturi
- Secția boli infecțioase		55 paturi
din care:		
- compartiment HIV/SIDA	5 paturi	



- compartiment copii

10 paturi

- Secția psihiatrie 80 paturi

- Unitate Primire Urgente (UPU)- SMURD
- Cabinet medicina dentara de urgenta

- Camera de garda

(pavilionul unde funcționează secțiile de psihiatrie și boli infecțioase)

TOTAL

787 paturi

- Insoțitori

24 paturi

- Spitalizare de zi

18 paturi

Notă: spitalul are aprobate 827 de paturi, din care 40 de paturi se închid temporar până li se va da o altă destinație

- Farmacia 1 (fosta nr.78 - pavilion central)

- Farmacia 2 (fosta nr.67)

- Farmacia 3 (fosta nr.65)

- Bloc operator central

- Sala de operații oftalmologie

- UTS

- Sterilizare

- Serviciul de internări si relații cu publicul

- Laborator analize medicale cu punct de lucru in ambulatoriul integrat

- Laborator radiologie si imagistica medicala cu punct de lucru in pavilionul in care functioneaza sectiile de pneumologie - str. Stefan cel Mare nr. 233

- compartiment CT

- Laborator endoscopie digestiva

- Serviciul de anatomie patologica

- compartiment citologie

- compartiment histopatologie

- compartiment prosectura

- Laborator explorări funcționale

- Centru de sănătate mintala (CSM)

- Centrul de sănătate mintala (CSM) - copii

- Laborator recuperare, medicina fizica si balneologie

- Serviciul județean de medicina legala

- Laborator bacteriologie BK

- Compartiment de endoscopie bronsica

- Serviciul de prevenire a infecțiilor asociate asistenței medicale

- Compartiment asistenta sociala

- Cabinet diabet zaharat, nutriție si boli metabolice

- Cabinet diabet zaharat, nutriție si boii metabolice - educație specifica

- Cabinet oncologie medicala

- Cabinet medicina sportiva

- Cabinet boli infecțioase

- Cabinet planificare familiala

- Serviciul evaluare, statistica medicala si informatica

- Dispensar TBC

- radiologie

- cabinet consultații

- cabinet asistente de teren

- registratura si fișier

- Dispensar TBC Negrești

Ambulatoriul integrat cu cabinete in specialitățile:

- medicina interna

- cardiologie

- ORL

- oftalmologie

- chirurgie generala

- obstetrica-ginecologie



- neurologie
- ortopedie si traumatologie
- dermatovenerologie
- endocrinologie
- urologie
- recuperare, medicina fizica si balneologie
- chirurgie pediatria
- cabinet audiologie
- pediatrie
- cardiologie pediatria
- audiologie
- medicina muncii
- recuperare, medicina fizica si balneologie
- reumatologie
- pneumologie
- nefrologie
- alergologie și imunologie clinică
- Punct de lucru al Laboratorului de analize medicale al spitalului
- Laborator radiologie si imagistica medicala
- Laborator recuperare, medicina fizica și balneologie
- Laborator de explorări funcționale
- Săli de tratamente
- Sterilizare
- Compartiment statistica medicala
- Fișiere
- Aparat funcțional

La nivelul spitalului funcționează Centrul Județean de Diabet zaharat, nutriție si boli metabolice

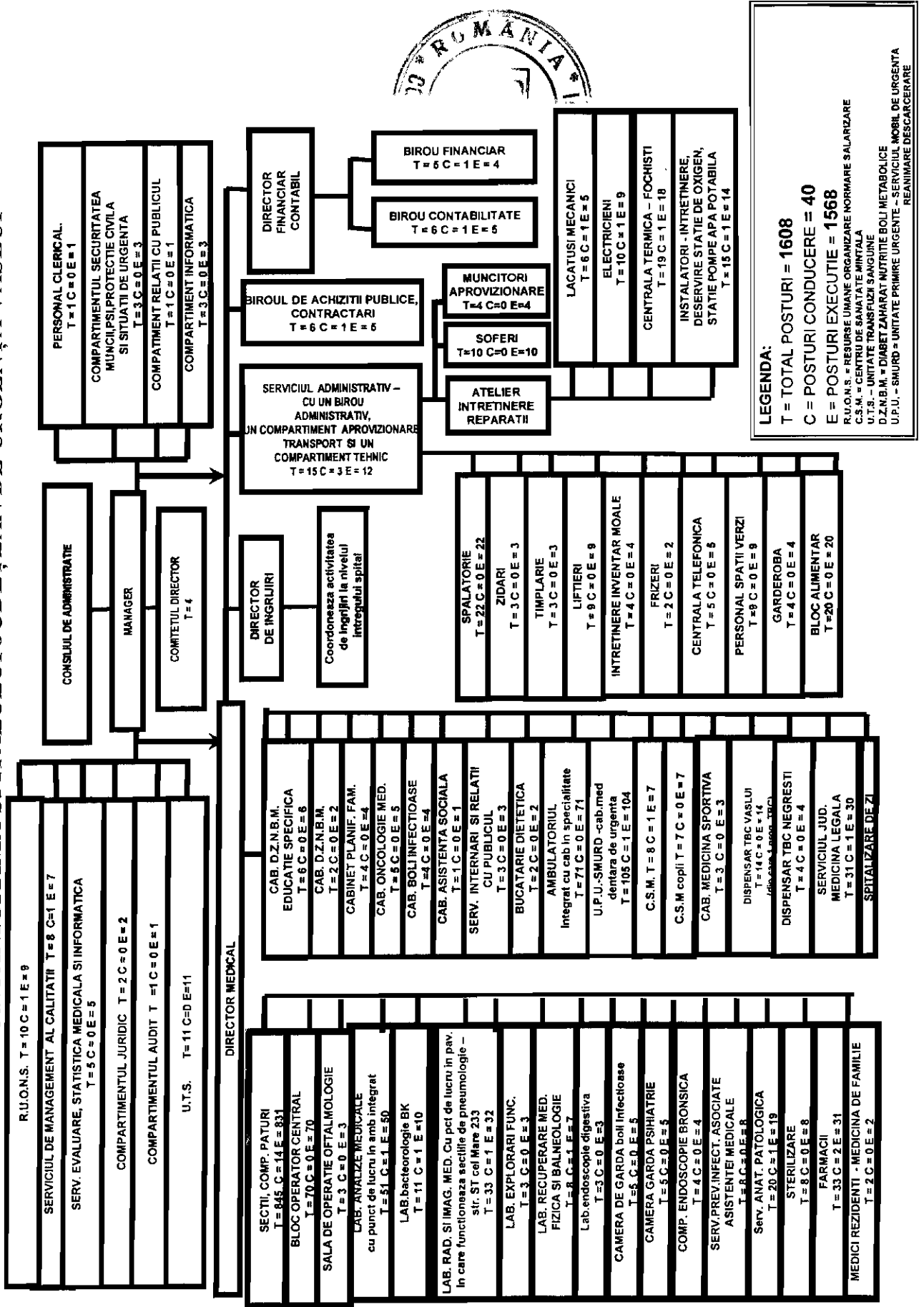
*** își va relua activitatea la prezentarea medicilor la post**



SPITALUL JUDEȚEAN DE URGENȚĂ VASLUI

ORGANIGRAMA SPITALULUI JUDEȚEAN DE URGENȚĂ VASLUI

ANEXA NR. 2 la
HCJ nr. 108 / 2016

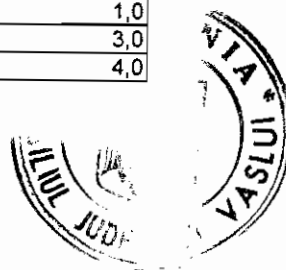


CONSILIUL JUDEȚEAN VASLUI

ANEXA. nr. 3 la HCJ nr. 268 /2016

STAT DE FUNCȚII
pentru Spitalul Județean de Urgență Vaslui

Nr. crt.	COMPARTIMENT/FUNCȚIE	Nivel studii	Nr. Posturi normate
COMITET DIRECTOR			4
1	MANAGER, GR.II	S	1,0
2	DIRECTOR MEDICAL, GR.II	S	1,0
3	DIRECTOR FINANCIAR CONTABIL, GR.II	S	1,0
4	DIRECTOR DE INGRIJIRI, GR.II	S	1,0
II. SECȚIA CHIRURGIE GENERALĂ - 74 paturi din care compartiment neurochirurgie - 5 paturi ; compartiment			68,0
5	MEDIC SEF SECȚIE, GR.II	S	1,0
6-11	MEDIC PRIMAR	S	6,0
12-14	MEDIC SPECIALIST	S	3,0
15	MEDIC REZIDENT AN V	S	1,0
16	ASISTENT MEDICAL PR SEF	PL	1,0
17-32	ASISTENT MEDICAL PR	PL	16,0
33-38	ASISTENT MEDICAL	PL	6,0
39-44	ASISTENT MEDICAL DEB.	PL	6,0
45	REGISTRATOR MEDICAL DEB.	M	1,0
46-56	INFIRMIERA	G	11,0
57	INFIRMIERA DEB.	G	1,0
58-68	INGRIJITOARE	G	11,0
69-72	BRANCARDIER	G	4,0
III. SECȚIA CHIRURGIE ȘI ORTOPEDIE INFANTILĂ - 26			24,0
73	MEDIC SEF SECȚIE, GR.I	S	1,0
74-75	MEDIC SPECIALIST	S	2,0
76	MEDIC REZIDENT AN V	S	1,0
77	MEDIC REZIDENT AN IV	S	1,0
78	ASISTENT MEDICAL PR SEF	PL	1,0
79	ASISTENT MEDICAL LICENȚIAT PR.	S	1,0
80-86	ASISTENT MEDICAL PR	PL	7,0
87	ASISTENT MEDICAL	PL	1,0
88-91	INFIRMIERA	G	4,0
92-94	INGRIJITOARE	G	3,0
95-96	BRANCARDIER	G	2,0
IV. SECȚIA ORTOPEDIE ȘI TRAUMATOLOGIE - 25 paturi			27,0
97	MEDIC SEF SECȚIE, GR.I	S	1,0
98	MEDIC PRIMAR	S	1,0
99-100	MEDIC SPECIALIST	S	2,0
101	MEDIC REZIDENT AN V	S	1,0
102	ASISTENT MEDICAL PR SEF	PL	1,0
103-109	ASISTENT MEDICAL PR	PL	7,0
110-111	ASISTENT MEDICAL	PL	2,0
112	REGISTRATOR MEDICAL	PL	1,0
113-115	INFIRMIERA	G	3,0
116	INFIRMIERA DEBUTANTA	G	1,0
117-119	INGRIJITOARE	G	3,0
120-123	BRANCARDIER	G	4,0



V. SECTIA OBSTETRICA GINECOLOGIE - 55 paturi			72,0
124	MEDIC SEF SECTIE, GR.II	S	1,0
125-130	MEDIC PRIMAR	S	6,0
131	MEDIC SPECIALIST	S	1,0
132	MEDIC REZIDENT AN V	S	1,0
133	MEDIC REZIDENT AN II	S	1,0
134	ASISTENT SOCIAL	S	1,0
135	ASISTENT MEDICAL PR SEF	PL	1,0
136-157	ASISTENT MEDICAL PR	PL	22,0
158-163	ASISTENT MEDICAL	PL	6,0
164-166	ASISTENT MEDICAL DEB.	PL	3,0
167	REGISTRATOR MEDICAL	M	1,0
168-175	INFIRMIERA	G	9,0
176-191	INGRIJITOARE	G	15,0
192-195	BRANCARDIER	G	4,0
VI. COMPARTIMENTUL OFTALMOLOGIE - 20 paturi			22,0
196-197	MEDIC PRIMAR	S	2,0
198-199	MEDIC SPECIALIST	S	2,0
200-206	ASISTENT MEDICAL PR	PL	7,0
207	ASISTENT MEDICAL	PL	1,0
208	REGISTRATOR MEDICAL DEB.	PL	1,0
209-212	INFIRMIERA	G	4,0
213-217	INGRIJITOARE	G	5,0
VII. SECTIA O.R.L. - 25 paturi din care comp.chirurgie orala si maxilo-faciala - 5 paturi			24,0
218	MEDIC SEF SECTIE, GR.I	S	1,0
219-220	MEDIC PRIMAR	S	2,0
221-222	MEDIC SPECIALIST	S	2,0
223	ASISTENT MEDICAL PR SEF	PL	1,0
224	ASISTENT MEDICAL LICENTIIAT PR	S	1,0
225-229	ASISTENT MEDICAL PR	PL	5,0
230-231	ASISTENT MEDICAL	PL	2,0
232	ASISTENT MEDICAL DEB.	PL	1,0
233-235	INFIRMIERA	G	3,0
236	INFIRMIERA DEB.	G	1,0
237-241	INGRIJITOARE	G	5,0
VIII. SECTIA NEONATOLOGIE - 40 paturi din care comp.prematuri - 10 paturi si comp.terapie intensiva - 8			73,0
242	MEDIC SEF SECTIE, GR.II	S	1,0
243-247	MEDIC SPECIALIST	S	5,0
248-249	MEDIC REZIDENT AN V	S	2,0
250	ASISTENT MEDICAL LICENTIIAT PR. SEF	S	1,0
251-253	ASISTENT MEDICAL LICENTIIAT PR	S	3,0
254-269	ASISTENT MEDICAL PR	PL	16,0
270-273	ASISTENT MEDICAL	PL	4,0
274-295	ASISTENT MEDICAL DEB.	PL	22,0
296-305	INFIRMIERA	G	10,0
306	INFIRMIERA DEB.	G	1,0
307-314	INGRIJITOARE	G	8,0
IX. SECTIA A.T.I. - 20 paturi			72,0
315	MEDIC SEF SECTIE, GR.I	S	1,0
316-318	MEDIC PRIMAR	S	3,0
319-324	MEDIC SPECIALIST	S	6,0
325-327	MEDIC REZIDENT AN V	S	3,0
328	MEDIC REZIDENT AN IV	S	1,0
329	ASISTENT MEDICAL LICENTIIAT PR. SEF	S	1,0
330	ASISTENT MEDICAL LICENTIIAT PR.	S	1,0
331-355	ASISTENT MEDICAL PR	PL	25,0
356-360	ASISTENT MEDICAL	PL	5,0
361	ASISTENT MEDICAL DEB.	PL	1,0
362	REGISTRATOR MEDICAL	M	1,0
363-371	INFIRMIERA	G	9,0
372-377	INFIRMIERA DEB.	G	6,0
378-381	INGRIJITOARE	G	4,0
382-385	BRANCARDIER	G	4,0
386	SECRETAR	M	1,0

X. SECTIA NEUROLOGIE - 59 paturi din care: comp.recuperare medicala neurologie - 9 paturi			73,0
387	MEDIC SEF SECTIE, GR.II	S	1,0
388-391	MEDIC PRIMAR	S	4,0
392-393	MEDIC SPECIALIST	S	2,0
394	KINETOTERAPEUT PRINCIPAL	S	1,0
395	ASISTENT MEDICAL PR SEF	PL	1,0
396-397	ASISTENT MEDICAL LICENTIIAT PR.	S	2,0
398-409	ASISTENT MEDICAL PR	PL	12,0
410-414	ASISTENT MEDICAL	PL	5,0
415-424	ASISTENT MEDICAL DEB.	PL	10,0
425	REGISTRATOR MEDICAL	M	1,0
426-439	INFIRMIERA	G	14,0
440-452	INFIRMIERA DEB.	G	13,0
453-456	INGRIJITOARE	G	4,0
457-459	BRANCARDIER	G	3,0
XI. SECTIA MEDICINA INTERNA - 89 paturi din care comp.gastroenterologie - 15 paturi; comp.D.Z.N.B.M.-10 paturi; comp.reumatologie - 5 paturi; comp.nefrologie - 5.			63,0
460	MEDIC SEF SECTIE, GR.II	S	1,0
461-465	MEDIC PRIMAR	S	5,0
466-468	MEDIC SPECIALIST	S	3,0
469-470	MEDIC REZIDENT AN IV	S	2,0
471	ASISTENT MEDICAL PR SEF	PL	1,0
472	ASISTENT MEDICAL LICENTIIAT PR	S	1,0
473-492	ASISTENT MEDICAL PR	PL	20,0
493-495	ASISTENT MEDICAL	PL	3,0
496-498	ASISTENT MEDICAL DEB.	PL	3,0
499	REGISTRATOR MEDICAL PR.	M	1,0
500-510	INFIRMIERA	G	11,0
511-512	INFIRMIERA DEB.	G	2,0
513-522	INGRIJITOARE	G	10,0
XII. SECTIA BOLI INFECTIOASE- 55 paturi din care comp.HIV SIDA - 5 paturi si comp.copii - 10 paturi			46,0
523	MEDIC SEF SECTIE, GR.II	S	1,0
524-526	MEDIC PRIMAR	S	3,0
527	MEDIC SPECIALIST	S	1,0
528	ASISTENT MEDICAL LICENTIIAT PR. SEF	S	1,0
529-532	ASISTENT MEDICAL LICENTIIAT PR	S	4,0
533-545	ASISTENT MEDICAL PR.	PL	13,0
546-548	ASISTENT MEDICAL	PL	3,0
549	ASISTENT MEDICAL DEB.	PL	1,0
550	REGISTRATOR MEDICAL PR	M	1,0
551	REGISTRATOR MEDICAL	M	1,0
552-558	INFIRMIERA	G	7,0
559	INFIRMIERA DEB.	G	1,0
560-568	INGRIJITOARE	G	9,0
XIII. SECTIA PSIHIATRIE - 80 paturi			68,0
569	MEDIC SEF SECTIE, GR.II	S	1,0
570-572	MEDIC PRIMAR	S	3,0
573-574	MEDIC SPECIALIST	S	2,0
575	MEDIC REZIDENT AN V	S	1,0
576	MEDIC REZIDENT AN IV	S	1,0
577	PSIHOLOG PR	S	1,0



578	ASISTENT MEDICAL PR SEF	PL	1,0
579-600	ASISTENT MEDICAL PR	PL	22,0
601	ASISTENT MEDICAL	PL	1,0
602	ASISTENT SOCIAL PR.	PL	1,0
603	INSTRUCTOR ERGOTERAPEUT DEB	M	1,0
604	REGISTRATOR MEDICAL PR.	M	1,0
605	REGISTRATOR MEDICAL	M	1,0
606-616	INFIRMIERA	G	11,0
617	INFIRMIERA DEB.	G	1,0
618-626	INGRIJITOARE	G	9,0
627-630	BRANCARDIER	G	4,0
631-636	MUNCITOR NECALIFICAT	G	6,0
XIV. SECTIA PNEUMOLOGIE - 88 paturi din care: comp.			74,0
637	MEDIC SEF SECTIE, GR.II	S	1,0
638-642	MEDIC PRIMAR	S	5,0
643-646	MEDIC SPECIALIST	S	4,0
647	MEDIC REZIDENT AN III	S	1,0
648	ASISTENT MEDICAL LICENTIIAT PR. SEF	S	1,0
649-650	ASISTENT MEDICAL LICENTIIAT PR	S	2,0
651-675	ASISTENT MEDICAL PR	PL	25,0
676	REGISTRATOR MEDICAL DEB.	M	1,0
677-689	INFIRMIERA	G	13,0
690-709	INGRIJITOARE	G	20,0
710	BRANCARDIER	G	1,0
XV. SECTIA PEDIATRIE - 54 paturi			51,0
711	MEDIC SEF SECTIE, GR.II	S	1,0
712-716	MEDIC PRIMAR	S	5,0
717	MEDIC SPECIALIST	S	1,0
718	ASISTENT SOCIAL	S	1,0
719	ASISTENT MEDICAL LICENTIIAT PR. SEF	S	1,0
720-728	ASISTENT MEDICAL LICENTIIAT PR	S	9,0
728-742	ASISTENT MEDICAL PR	PL	14,0
743	ASISTENT MEDICAL	PL	1,0
744	REGISTRATOR MEDICAL	M	1,0
745-752	INFIRMIERA	G	8,0
753-760	INGRIJITOARE	G	9,0
XVI. SECTIA CARDIOLOGIE - 26 paturi			26,0
762	MEDIC SEF SECTIE, GR.I	S	1,0
763-764	MEDIC SPECIALIST	S	2,0
765	MEDIC REZIDENT AN VI	S	1,0
766	MEDIC REZIDENT AN V	S	1,0
767	ASISTENT MEDICAL PR SEF	PL	1,0
768-777	ASISTENT MEDICAL PR	PL	10,0
787-782	INFIRMIERA	G	5,0
783-787	INGRIJITOARE	G	5,0
XVII. COMPARTIMENTUL DERMATOVENEROLOGIE - 16			16,0
788-790	MEDIC PRIMAR	S	3,0
791	MEDIC SPECIALIST	S	1,0
792-797	ASISTENT MEDICAL PR	PL	6,0
798-800	INFIRMIERA	G	3,0
801-803	INGRIJITOARE	G	3,0
XVIII. COMPARTIMENTUL ONCOLOGIE MEDICALA - 20 paturi din care comp.hematologie - 5 paturi			22,0
804	MEDICI SPECIALIST	S	1,0
805	MEDIC REZIDENT AN V	S	1,0
806	MEDIC REZIDENT AN IV	S	1,0
807-810	ASISTENT MEDICAL PR	PL	4,0
811-812	ASISTENT MEDICAL	PL	2,0
813-814	ASISTENT MEDICAL DEB.	PL	2,0
815	REGISTRATOR MEDICAL DEB.	M	1,0
816-818	INFIRMIERA	G	3,0
819-824	INGRIJITOARE	G	6,0
825	BRANCARDIER	G	1,0

XIX. COMPARTIMENTUL RECUPERARE, MEDICINA FIZICA SI BALNEOLOGIE - 16 paturi		0	24,0
826-827	MEDIC SPECIALIST	S	2,0
828	KINETOTERAPEUT	S	1,0
829-838	ASISTENT MEDICAL PR	PL	10,0
839	REGISTRATOR MEDICAL PR.	M	1,0
840-847	INFIRMIERA	G	8,0
848-849	INGRIJITOARE	G	2,0
XX. BLOC OPERATOR CENTRAL			70,0
850	ASISTENT MEDICAL LICENTIIAT PR SEF	S	1,0
851-854	ASISTENT MEDICAL LICENTIIAT PR	S	4,0
855-876	ASISTENT MEDICAL PR	PL	22,0
877-878	ASISTENT MEDICAL	PL	2,0
879-880	ASISTENT MEDICAL	PL	2,0
881-889	INFIRMIERA	G	9,0
890-901	INFIRMIERA DEB.	G	12,0
902-909	INGRIJITOARE	G	8,0
910-919	BRANCARDIER	G	10,0
XXI. SALA OPERATII OFTALMOLOGIE			3,0
920-921	ASISTENT MEDICAL PR	PL	2,0
922	INFIRMIERA DEB.	G	1,0
XXII. U.T.S.			11,0
923-924	ASISTENT MEDICAL LICENTIIAT PR.	S	2,0
925-928	ASISTENT MEDICAL PR	PL	4,0
929	ASISTENT MEDICAL	PL	1,0
930	ASISTENT MEDICAL DEB	PL	1,0
931-933	INGRIJITOARE	G	3,0
XXIII. LABORATOR ANALIZE MEDICALE CU PUNCT DE LUCRU IN AMBULATORIUL INTEGRAT			51,0
934	MEDIC SEF LABORATOR, GR.II	S	1,0
935	MEDIC PRIMAR	S	1,0
936-937	MEDIC SPECIALIST	S	2,0
938	MEDIC REZIDENT AN IV	S	1,0
939	MEDIC REZIDENT AN V	S	1,0
940-941	BIOLOG PR	S	2,0
940	BIOLOG SPECIALIST	S	1,0
942-948	CHIMIST PR	S	6,0
949	CHIMIST SPECIALIST	S	1,0
950-952	CHIMIST	S	3,0
953	CHIMIST DEB.	S	1,0
954	BIOLOG DEB.	S	1,0
955	ASISTENT MEDICAL PR SEF	PL	1,0
956-972	ASISTENT MEDICAL PR	PL	17,0
973-977	ASISTENT MEDICAL	PL	5,0
978-979	ASISTENT MEDICAL DEB.	PL	2,0
980	REGISTRATOR MEDICAL PR	M	1,0
981-984	INGRIJITOARE	G	4,0
XXIV. LABORATOR BACTERIOLOGIE BK			11,0
985	MEDIC SEF LABORATOR, GR.I	S	1,0
986	MEDIC SPECIALIST	S	1,0
987	BIOLOG SPECIALIST	S	1,0
988	BIOLOG	S	1,0
989	BIOLOG DEBUTANT	S	1,0
990-994	ASISTENT MEDICAL PR	PL	5,0
995	INGRIJITOARE	G	1,0
XXV. LABORATOR RADIOLOGIE SI IMAGISTICA MEDICALA cu pct de lucru in pavilionul in care functioneaza sectiile de pneumologie - str. St. cel Mare nr. 233 - Compartiment CT			33,0
996	MEDIC SEF LABORATOR, GR.II	S	1,0
997-999	MEDIC SPECIALIST	S	3,0
1000-1001	MEDIC REZIDENT AN V	S	2,0
1002	FIZICIAN SPECIALIST	S	1,0
1003	ASISTENT MEDICAL PR SEF	PL	1,0
1004	ASISTENT MEDICAL LICENTIIAT PR.	S	1,0
1005-1015	ASISTENT MEDICAL PR	PL	11,0
1016-1021	ASISTENT MEDICAL	PL	6,0

1022	ASISTENT MEDICAL DEBUTANT	PL	1,0
1023	REGISTRATOR MEDICAL PR.	G	1,0
1024-1028	INGRIJITOARE	G	5,0
XXVI. LABORATOR EXPLORARI FUNCTIONALE			3,0
1029	MEDIC SPECIALIST	S	1,0
1030	ASISTENT MEDICAL PR	PL	1,0
1031	ASISTENT MEDICAL	PL	1,0
XXVII. LABORATOR RECUPERARE, MEDICINA FIZICA SI			8,0
1032	MEDIC SEF LABORATOR, GR.I	S	1,0
1033	MEDIC SPECIALIST	S	1,0
1034	PROFESOR CFM	S	1,0
1035-1038	ASISTENT MEDICAL PR	PL	4,0
1039	INGRIJITOARE	G	1,0
XXVIII. LABORATOR ENDOSCOPIE DIGESTIVA			3,0
1040	ASISTENT MEDICAL LICENTIIAT PR.	S	1,0
1041	ASISTENT MEDICAL PR	PL	1,0
1042	INGRIJITOARE	G	1,0
XXIX. CAMERA DE GARDA BOLI INFECTIOASE			5,0
1043	ASISTENT MEDICAL PR	PL	1,0
1044-1045	ASISTENT MEDICAL	PL	2,0
1046-1047	ASISTENT MEDICAL DEB.	PL	2,0
XXX. CAMERA DE GARDA PSIHIARIE			5,0
1048	ASISTENT MEDICAL	S	1,0
1049	ASISTENT MEDICAL PR.	PL	1,0
1050	ASISTENT MEDICAL	PL	1,0
1051-1052	ASISTENT MEDICAL DEB.	PL	2,0
XXXI. COMPARTAMENT ENDOSCOPIE BRONSICA			4,0
1053	ASISTENT MEDICAL LICENTIIAT PR	S	1,0
1051-1055	ASISTENT MEDICAL PR	PL	2,0
1056	INGRIJITOARE	G	1,0
XXXII. SERVICIUL DE PREVENIRE A INFECTIILOR ASOCIATE ASISTENTEI MEDICALE			8,0
1057	MEDIC PRIMAR	S	1,0
1058	MEDIC SPECIALIST	S	1,0
1059	MEDIC REZIDENT AN III	S	1,0
1060-1061	ASISTENT MEDICAL LICENTIIAT PR	S	2,0
1062	ASISTENT MEDICAL PR	PL	1,0
1063-1064	AGENT DDD	G	2,0
XXXIII. SERVICIUL DE ANATOMIE PATOLOGICA cu comp. citologie, comp. histopatologie, comp. prosectura)			20,0
1065	MEDIC SEF SERVICIU, GR.II	S	1,0
1066-1067	MEDIC PRIMAR	S	2,0
1068	MEDIC SPECIALIST	S	1,0
1069-1072	ASISTENT MEDICAL PR	PL	4,0
1073-1076	ASISTENT MEDICAL	PL	4,0
1077-1080	ASISTENT MEDICAL DEB.	PL	4,0
1081-1082	INGRIJITOARE	G	2,0
1083-1084	AUTOPSIER PRINCIPAL	M	2,0

XXXIV. STERILIZARE			8,0
1085	ASISTENT MEDICAL PR SEF	PL	1,0
1086	ASISTENT MEDICAL LICENTIIAT PR	S	1,0
1087-1090	ASISTENT MEDICAL PR	PL	4,0
1091-1092	INGRIJITOARE	G	2,0
XXXV. FARMACII CU CIRCUIT INCHIS			33,0
FARMACIA NR. 1			18,0
1093	FARMACIST SEF SECTIE, GR.II	S	1,0
1094	FARMACIST	S	1,0
1095-1103	ASISTENT MEDICAL PR	PL	9,0
1104-1105	ASISTENT MEDICAL	PL	2,0
1106	ASISTENT MEDICAL DEB.	PL	1,0
1107-1109	INGRIJITOARE	G	3,0
1110	OPERATOR CONTROLOR DATE III	M	1,0
FARMACIA NR. 2			8,0
1111	FARMACIST SEF SECTIE, GR.I	S	1,0
1112	FARMACIST	S	1,0
1113-1116	ASISTENT MEDICAL PR	PL	4,0
1117-1118	INGRIJITOARE	G	2,0
FARMACIA NR. 3			7,0
1119	FARMACIST REZIDENT AN.III	S	1,0
1120	FARMACIST SPECIALIST	S	1,0
1121-1124	ASISTENT MEDICAL PR	PL	4,0
1125	INGRIJITOARE	G	1,0
XXXVI. CABINET DIABET ZAHARAT, NUTRITIE SI BOLI METABOLICE - EDUCATIE SPECIFICA			6,0
1126	MEDIC PRIMAR	S	1,0
1127	MEDIC REZIDENT AN III	S	1,0
1128-1130	ASISTENT MEDICAL PR	PL	3,0
1131	INGRIJITOARE	G	1,0
XXXVII. CABINET DIABET ZAHARAT, NUTRITIE SI BOLI			2,0
1132	MEDIC SPECIALIST	S	1,0
1133	ASISTENT MEDICAL PR	PL	1,0
XXXVIII. CABINET PLANIFICARE FAMILIALA			4,0
1134	MEDIC PRIMAR	S	1,0
1135	MEDIC SPECIALIST	S	1,0
1136-1137	ASISTENT MEDICAL PR	PL	2,0
XXXIX. CABINET ONCOLOGIE MEDICALA			5,0
1138	MEDIC PRIMAR	S	1,0
1139	MEDIC SPECIALIST	S	1,0
1140-1141	ASISTENT MEDICAL PR	PL	2,0
1142	REGISTRATOR MEDICAL PR.	M	1,0
XL. CABINET BOLI INFECTIOASE			4,0
1143-1144	MEDIC SPECIALIST	S	2,0
1145	ASISTENT MEDICAL PR	PL	1,0
1146	ASISTENT MEDICAL	PL	1,0
XLI. CABINET ASISTENTA SOCIALA			1,0
1147	ASISTENTA SOCIALA PR.	S	1,0
XLII. SERVICIUL EVALUARE, STATISTICA MEDICALA SI			5,0
1148	BIOINGINER MEDICAL SPECIALIST	S	1,0
1149	ASISTENT MEDICAL LICENTIIAT PR	S	1,0
1150	ASISTENT MEDICAL PR	PL	1,0
1151	ANALIST PROGRAMATOR I	S	1,0
1152	STATISTICIAN PR	M	1,0
XLIII. SERVICIUL DE INTERNARI SI RELATII CU			3,0
1153-1154	REGISTRATOR MEDICAL PR	M	2,0
1155	REGISTRATOR MEDICAL	M	1,0



XLIV. BUCATARIE DIETETICA			2,0
1156-1157	ASISTENT MEDICAL	PL	2,0
XLV. SPALATORIE			22,0
1158-1159	SPALATOREASA CU GESTIUNE	G	2,0
1160-1179	SPALATOREASA	G	20,0
XLVI. COMPARTIMENT RELATII CU PUBLICUL			1,0
1180	REFERENT TR. IA	M	1,0
XLVII. COMPARTIMENTUL SECURITATEA MUNCII, PSI, PROTECTIE CIVILA SI SITUATII DE URGENTA			3,0
1181	REFERENT DE SPECIALITATE GR.II	S	1,0
1182	REFERENT DEBUTANT	M	1,0
1183	MUNCITOR TR.I.	PR	1,0
XLVIII. SERVICIUL R.U.O.N.S.			10,0
1184	SEF SERV. GR.II	S	1,0
1185	ECONOMIST GR.IA	S	1,0
1186	ECONOMIST GR.I	S	1,0
1187	ECONOMIST GR.II	S	1,0
1188	REFERENT DE SPECIALITATE GR.II	S	1,0
1189-1190	REFERENT DE SPECIALITATE GR.III	S	2,0
1191-1192	REFERENT TR. IA	M	2,0
1193	OPERATOR CONTROLOR DATE TR.I	M	1,0
XLIX. SERVICIUL ADMINISTRATIV CU UN BIROU ADMINISTRATIV, UN COMPARTIMENT APROVIZIONARE TRANSPORT SI UN COMPARTIMENT TEHNIC			15,0
1194	SEF SERVICIU GR.II	S	1,0
1195	SEF BIROU, GR.II	S	1,0
1196	SEF ATELIER INTRETINERE SI REPARATII, GR.II	SSD	1,0
1197	BIOINGINER MEDICAL SPECIALIST	S	1,0
1198	TEHNICIAN PR.SANITAR	PL	1,0
1199	DACTILOGRAF TR. I	M	1,0
1200-1202	FUNCTIONAR	M	3,0
1203	SECRETAR DACTILOGRAF TR. IA	M	1,0
1204	ARHIVAR	M	1,0
1205-1206	SEF DEPOZIT GR.I.	M	2,0
1207	MERCEOLOG TR. IA	M	1,0
1208	MAGAZINER	M	1,0
L. BIROUL DE ACHIZITII PUBLICE, CONTRACTARI			6,0
1209	SEF BIROU GR.II	S	1,0
1210	ECONOMIST GR. IA	S	1,0
1211	ECONOMIST GR. I	S	1,0
1212	REFERENT DE SPECIALITATE GR.II	S	1,0
1213	INGINER GR.II	S	1,0
1214	REFERENT TR. IA	M	1,0
LI. BIROU CONTABILITATE			6,0
1215	SEF BIROU GR.II	S	1,0
1216-1218	ECONOMIST GR. IA	S	3,0
1219	ECONOMIST GR.II	S	1,0
1220	CONTABIL TR. IA	M	1,0
LII. BIROU FINANCIAR			5,0
1221	SEF BIROU GR.II	S	1,0
1222	ECONOMIST GR. IA	S	1,0
1223-1224	CONTABIL TR. IA	M	2,0
1225	CASIER	M	1,0
LIII. PERSONAL CLERICAL			1,0
1226	PREOT DEFINITIV	S	1,0
LIV. COMPARTIMENT AUDIT			1,0
1227	AUDITOR GR. I	S	1,0

JUDETUL IN V.

LV. COMPARTIMENTUL INFORMATICA			3,0
1228	INFORMATICIAN GR. III	SSD	1,0
1229	INGINER DE SISTEM GR.IA	S	1,0
1230	OPERATOR CONTROLOR DATE TR.II	M	1,0
LVI. COMPARTIMENTUL JURIDIC			2,0
1231	CONSILIER JURIDIC GR.IA	S	1,0
1232	CONSILIER JURIDIC GR.I	S	1,0
LVII. SERVICIUL DE MANAGEMENT AL CALITATII			8,0
1233	SEF SERVICIU GR. I	S	1,0
1234	MEDIC SPECIALIST	S	1,0
1235	ASISTENT MEDICAL LICENTIAI PR	S	1,0
1236	ASISTENT MEDICAL DEB.	S	1,0
1237-1238	ECONOMIST GR. II	S	2,0
1239	BIOINGINER MEDICAL SPECIALIST	S	1,0
1240	CONSILIER JURIDIC DEBUTANT	S	1,0
LVIII. MUNCITORI			123,0
ZIDARI			3,0
1241	MUNCITOR CALIFICAT TR.III		1,0
1242-1243	MUNCITOR CALIFICAT TR.IV		2,0
TIMPLARI			3,0
1244-1245	MUNCITOR CALIFICAT TR.III		2,0
1246	MUNCITOR CALIFICAT TR.IV		1,0
LACATUSI MECANICI			6,0
1247	SEF ECHIPA		1,0
1248	MUNCITOR CALIFICAT TR.I.		1,0
1249-1251	MUNCITOR CALIFICAT TR.II.		3,0
1252	MUNCITOR CALIFICAT TR.III		1,0
ELECTRICIENI - INTRETINERE, DESERVIRE GRUP ELECTROGEN			10,0
1253	SEF ECHIPA		1,0
1254-1257	MUNCITOR CALIFICAT TR.II		4,0
1258	MUNCITOR CALIFICAT TR.III		1,0
1259-1262	MUNCITOR CALIFICAT TR.IV		4,0
DESERVIRE CENTRALA TERMICA I			10,0
1263	SEF ECHIPA		1,0
1264	MUNCITOR CALIFICAT TR.I		1,0
1265-1267	MUNCITOR CALIFICAT TR.II		3,0
1268-1270	MUNCITOR CALIFICAT TR.III		3,0
1271-1272	MUNCITOR CALIFICAT TR.IV		2,0
DESERVIRE CENTRALA TERMICA II			9,0
1273-1274	MUNCITOR CALIFICAT TR.I		2,0
1275-1276	MUNCITOR CALIFICAT TR.II		2,0
1277-1278	MUNCITOR CALIFICAT TR.III		2,0
1279-1281	MUNCITOR CALIFICAT TR.IV		3,0
INSTALATORI - INTRETINERE, DESERVIRE STATIE DE OXIGEN, STATIE POMPE APA POTABILA			15,0
1282	SEF ECHIPA		1,0
1283-1288	MUNCITOR CALIFICAT TR.I		6,0
1289-1291	MUNCITOR CALIFICAT TR.II		3,0
1292-1295	MUNCITOR CALIFICAT TR.III		4,0
1296	MUNCITOR CALIFICAT TR.IV		1,0
DESERVIRE LIFTURI			9,0
1297-1305	MUNCITOR CALIFICAT TR.IV		9,0
INTRETINERE INVENTAR MOALE			4,0
1306-1309	MUNCITOR CALIFICAT TR.II		4,0
FRIZERIE			2,0
1310-1311	MUNCITOR CALIFICAT TR.IV		2,0
CENTRALA TELEFONICA			5,0
1312-1316	MUNCITOR CALIFICAT TR.III		5,0
INTRETINERE SPATII VERZI-DESERVIRE CREMATORIU			9,0
1317	MUNCITOR CALIFICAT TR.III		1,0
1318-1325	MUNCITOR NECALIFICAT TR.I		8,0

	ACTIVITATE CONDUCERE AUTO		10,0
1326-1330	SOFER TR. I		5,0
1331-1335	SOFER TR. II		5,0
	GARDEROBA		4,0
1336-1339	GARDEROBIERA	M,G	4,0
	BLOCURI ALIMENTARE - BUCATARI		9,0
1340-1344	MUNCITOR CALIFICAT TR.II		5,0
1345	MUNCITOR CALIFICAT TR.III		1,0
1346-1348	MUNCITOR CALIFICAT TR.IV		3,0
	MUNCITORI NECALIFICATI BUCATARIE		11,0
1349-1359	MUNCITOR NECALIFICAT II		11,0
	MUNCITORI APROVIZIONARE		4,0
1360-1363	MUNCITOR NECALIFICAT II		4,0
	LIX. AMBULATORIU INTEGRAT CU CABINETE IN		71,0
	CABINET MEDICINA INTERNA		2,0
1364-1365	ASISTENT MEDICAL PR	PL	2,0
	CABINET CARDIOLOGIE		2,0
1366-1367	ASISTENT MEDICAL DEB.	PL	2,0
	CABINET CARDIOLOGIE PEDIATRICA		4,0
1368	MEDIC SPECIALIST	S	1,0
1369	MEDIC REZIDENT AN V	S	1,0
1370-1371	ASISTENT MEDICAL DEB.	PL	2,0
	SALA TRATAMENT		1,0
1372	ASISTENT MEDICAL	PL	1,0
	CABINET O.R.L.		2,0
1373	ASISTENT MEDICAL PR	PL	1,0
1374	ASISTENT MEDICAL	PL	1,0
	CABINET AUDIOLOGIE		2,0
1375	ASISTENT MEDICAL PR	PL	1,0
1376	ASISTENT MEDICAL	PL	1,0
	CABINET MEDICINA MUNCII		4,0
1377-1378	MEDIC SPECIALIST	S	2,0
1379-1380	ASISTENT MEDICAL PR	PL	2,0
	CABINET OFTALMOLOGIE		2,0
1381-1382	ASISTENT MEDICAL PR	PL	2,0
	CABINET ENDOCRINOLOGIE		4,0
1383	MEDIC PRIMAR	S	1,0
1384	MEDIC REZIDENT AN V	S	1,0
1385-1386	ASISTENT MEDICAL DEB.	PL	2,0
	CABINET OBSTETRICA GINECOLOGIE		2,0
1387	ASISTENT MEDICAL LICENTIIAT PR	S	1,0
1388	ASISTENT MEDICAL PR	PL	1,0
	CABINET NEUROLOGIE		2,0
1389-1390	ASISTENT MEDICAL PR	PL	2,0
	CABINET ORTOPEDIE SI TRAUMATOLOGIE		2,0
1391-1392	ASISTENT MEDICAL PR	PL	2,0
	CABINET DERMATOVENEROLOGIE		2,0
1393-1394	ASISTENT MEDICAL PR	PL	2,0
	CABINET UROLOGIE		3,0
1395	MEDIC SPECIALIST	S	1,0
1396-1397	ASISTENT MEDICAL PR	PL	2,0
	CABINET CHIRURGIE PEDIATRICA		2,0
1395-1399	ASISTENT MEDICAL PR	PL	2,0

10 JUN

VA

	CABINET CHIRURGIE GENERALA		2,0
1400	ASISTENT MEDICAL PR	PL	1,0
1401	ASISTENT MEDICAL	PL	1,0
	CABINET PEDIATRIE		3,0
1402-1403	ASISTENT MEDICAL PR	PL	2,0
1404	ASISTENT MEDICAL	PL	1,0
	CABINET REUMATOLOGIE		2,0
1405	MEDIC SPECIALIST	S	1,0
1406	ASISTENT MEDICAL	PL	1,0
	CABINET PNEUMOLOGIE		2,0
1407	ASISTENT MEDICAL PR	PL	1,0
1408	ASISTENT MEDICAL	PL	1,0
	CABINET RECUPERARE, MEDICINA FIZICA SI BALNEOLOGIE		2,0
1409-1410	ASISTENT MEDICAL	PL	2,0
	PUNCT DE LUCRU AL LABORATORULUI DE ANALIZE MEDICALE AL SPITALULUI		2,0
1411-1412	ASISTENT MEDICAL PR	PL	2,0
	CABINET NEFROLOGIE		2,0
1413	MEDIC SPECIALIST	S	1,0
1414	ASISTENT MEDICAL	PL	1,0
	CABINET ALERGOLOGIE SI IMUNOLOGIE CLINICA		2,0
1415	MEDIC SPECIALIST	S	1,0
1416	ASISTENT MEDICAL PR.	PL	1,0
	LABORATOR RECUPERARE, MEDICINA FIZICA SI BALNEOLOGIE		3,0
1417-1419	ASISTENT MEDICAL PR	PL	3,0
	LABORATOR RADIOLOGIE SI IMAGISTICA MEDICALA		2,0
1420-1421	ASISTENT MEDICAL PR	PL	2,0
	LABORATOR DE EXPLORARI FUNCTIONALE		2,0
1422-1423	ASISTENT MEDICAL PR	PL	2,0
	STERILIZARE		2,0
1424-1425	ASISTENT MEDICAL	PL	2,0
	COMPARTIMENT STATISTICA MEDICALA		2,0
1426-1427	STATISTICIAN PR	M	2,0
	FISIERE		2,0
1428-1429	REGISTRATOR MEDICAL PR	M	2,0
	PERSONAL CURATENIE		5,0
1430-1434	INGRIJITOARE	G	5,0
	LX. UNITATE PRIMIRE URGENTE - SMURD cu Cabinet Medicina Dentara de Urgenta		105,0
1435	MEDIC SEF SECTIE, GR.II	S	1,0
1436-1437	MEDIC PRIMAR	S	2,0
1438-1444	MEDIC SPECIALIST	S	7,0
1445	MEDIC	S	1,0
1446-1450	MEDIC REZIDENT AN V	S	5,0
1451	ASISTENT SOCIAL PR.	S	1,0
1452	ASISTENT SOCIAL DEBUTANT	S	1,0
1453-1454	ASISTENT SOCIAL	S	2,0
1455	ASISTENT SOCIAL DEBUTANT	S	1,0
1456	ASISTENT MEDICAL PR SEF	PL	1,0
1457-1488	ASISTENT MEDICAL PR	PL	32,0
1489-1501	ASISTENT MEDICAL	PL	13,0
1502	ASISTENT MEDICAL DEBUTANT	PL	1,0
1503-1504	REGISTRATOR MEDICAL PR.	M	2,0
1505-1506	REGISTRATOR MEDICAL	M	2,0
1507	REGISTRATOR MEDICAL DEB.	M	1,0
1508-1519	INFIRMIERA	G	12,0
1520-1526	INGRIJITOARE	G	7,0
1527-1538	BRANCARDIER	G	12,0
1539	SECRETAR DACTILOGRAF TR.I	M	1,0

LXI. CENTRUL DE SANATATE MINTALA			8,0
1540	MEDIC SEF CENTRU GR I	S	1,0
1541	MEDIC SPECIALIST	S	1,0
1542	PSIHOLOG SPECIALIST	S	1,0
1543	PSIHOLOG PRACTICANT	S	1,0
1544	SOCIOLOG PR.	S	1,0
1545-1546	ASISTENT MEDICAL PR	PL	2,0
1547	REGISTRATOR MEDICAL PR.	M	1,0
LXII. CENTRUL DE SANATATE MINTALA - COPII			7,0
1548	MEDIC PRIMAR	S	1,0
1549	MEDIC REZIDENT AN IV	S	1,0
1550	LOGOPED PRINCIPAL	S	1,0
1551	PSIHOLOG STAGIAR	S	1,0
1552	ASISTENT MEDICAL PR	PL	1,0
1553	SOCIOLOG DEBUTANT	S	1,0
1554	ASISTENT MEDICAL	PL	1,0
LXIII. CABINET MEDICINA SPORTIVA			3,0
1555	MEDIC SPECIALIST	S	1,0
1556	PROFESOR PR	S	1,0
1557	ASISTENT MEDICAL PR	PL	1,0
LXIV. DISPENSAR T.B.C. cu radiologie, cab. consultatii, cab. asistente teren, registratura si fisier			14,0
1558	MEDIC PRIMAR	S	1,0
1559-1560	MEDIC SPECIALIST	S	2,0
1561	ASISTENT MEDICAL LICENTIIAT PR	S	1,0
1562-1567	ASISTENT MEDICAL PR	PL	6,0
1568	REGISTRATOR MEDICAL PR	M	1,0
1569-1570	INGRIJITOARE	G	2,0
1571	SOFER TR. II	M	1,0
LXV. DISPENSAR T.B.C. NEGRESTI			4,0
1572	MEDIC SPECIALIST	S	1,0
1573	ASISTENT MEDICAL LICENTIIAT PR	S	1,0
1574	ASISTENT MEDICAL PR.	PL	1,0
1575	INGRIJITOARE	G	1,0
LXVI. SERVICIUL JUDETEAN DE MEDICINA LEGALA			31,0
1576	MEDIC SEF SERV, GR.II	S	1,0
1577-1578	MEDIC PRIMAR	S	2,0
1579-1580	MEDIC SPECIALIST	S	2,0
1581	MEDIC REZIDENT AN V	S	1,0
1582	BIOLOG	S	1,0
1583-1584	CHIMIST PR	S	2,0
1585	PSIHOLOG	S	1,0
1586-1590	ASISTENT MEDICAL PR	PL	5,0
1591-1592	ASISTENT MEDICAL	PL	2,0
1593-1594	ASISTENT MEDICAL DEB.	PL	2,0
1595-1596	AUTOPSIER PRINCIPAL	M	2,0
1597-1598	AUTOPSIER	M	2,0
1599	AUTOPSIER DEB.	M	1,0
1600-1604	INGRIJITOARE	G	5,0
1605-1606	BRANCARDIER	G	2,0
LXVII. COMPARTIMENT MEDICI REZIDENTI - MEDICINA			2,0
1607-1608	MEDIC REZIDENT AN II	S	2,0
	TOTAL		1608,0