

**ROMÂNIA**  
**JUDEȚUL VASLUI**  
**CONSILIUL JUDEȚEAN**

**HOTĂRÂREA Nr. 35 / 2017**  
**privind modificarea organigramei și a statului de funcții al personalului din cadrul**  
**Spitalului Județean de Urgență Vaslui**

având în vedere:

- expunerea de motive a președintelui Consiliului Județean Vaslui privind propunerea de modificare a statului de funcții al Spitalului Județean de Urgență Vaslui;  
- adresele Spitalului Județean de Urgență Vaslui nr. 1597/10.02.2017, nr. 2016/2017 și nr. 2059/2017;

în conformitate cu dispozițiile:

- art. 26 din Legea-cadru nr. 284/2010 privind salarizarea unitară a personalului plătit din fonduri publice;

- Ordinului Ministerului Sănătății nr.1470/2011 pentru aprobarea criteriilor privind angajarea și promovarea în funcții, grade și trepte profesionale în unitățile sanitare publice din sectorul sanitar;

- Ordonanței de Urgență a Guvernului nr.162/2008 privind transferul ansamblului de atribuții și competențe exercitate de Ministerul Sănătății Publice către autoritățile administrației publice locale, cu modificările și completările ulterioare;

- Hotărârii Guvernului nr. 56/2009 pentru aprobarea Normelor metodologice de aplicare a Ordonanței de urgență a Guvernului nr. 162/2008;

în temeiul art. 91 alin. (1), lit. a) și alin. (2), lit. c) și art. 97 alin. (1) din Legea nr. 215/2001 privind administrația publică locală, republicată, cu modificările și completările ulterioare;

**Consiliul Județean Vaslui**

**HOTĂRĂȘTE:**

**Art.1.** – Se aprobă transformarea unui post **de medic rezident anul III în medic specialist** în cadrul Cabinetului Diabet Zaharat, Nutriție și Boli Metabolice – Educație Specifică.

**Art.2.** – Se aprobă transformarea unui post vacant de **asistent medical principal în asistent medical debutant**.

**Art.3.** – Se aprobă transformarea unui post vacant de **economist gradul I în inginer debutant**.

**Art.4.** – Se aprobă **desființarea unui post de asistent social** din cadrul Secției de Pediatrie din statul de funcții aprobat prin Hotărârea Consiliului Județean Vaslui nr. 249/2016, cu modificările ulterioare.

**Art.5.** – Se aprobă **înființarea unui post de asistent social debutant** în cadrul Cabinetului de Asistență Socială.

**Art.6.** – Se aprobă transformarea unui post de **muncitor IV în muncitor III**, în vederea promovării persoanei care ocupă postul.

**Art.7.** – Se aprobă Organigrama Spitalului Județean de Urgență Vaslui prevăzută în anexa nr. 1, care face parte integrantă din prezenta hotărâre.

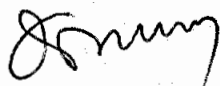
**Art.8.** – Se aprobă Statul de funcții al personalului din cadrul Spitalului Județean de Urgență Vaslui prevăzut în anexa nr. 2, care face parte integrantă din prezenta hotărâre.

**Art.9.** – La data intrării în vigoare a prezentei hotărâri anexele nr. 2 și nr. 3 din Hotărârea Consiliului Județean Vaslui nr. 249/2016, cu modificările ulterioare se abrogă.

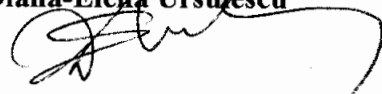
**Art.10.** – Aducerea la îndeplinire a prezentei hotărâri revine Spitalului Județean de Urgență Vaslui.

Vaslui, 28 februarie 2017

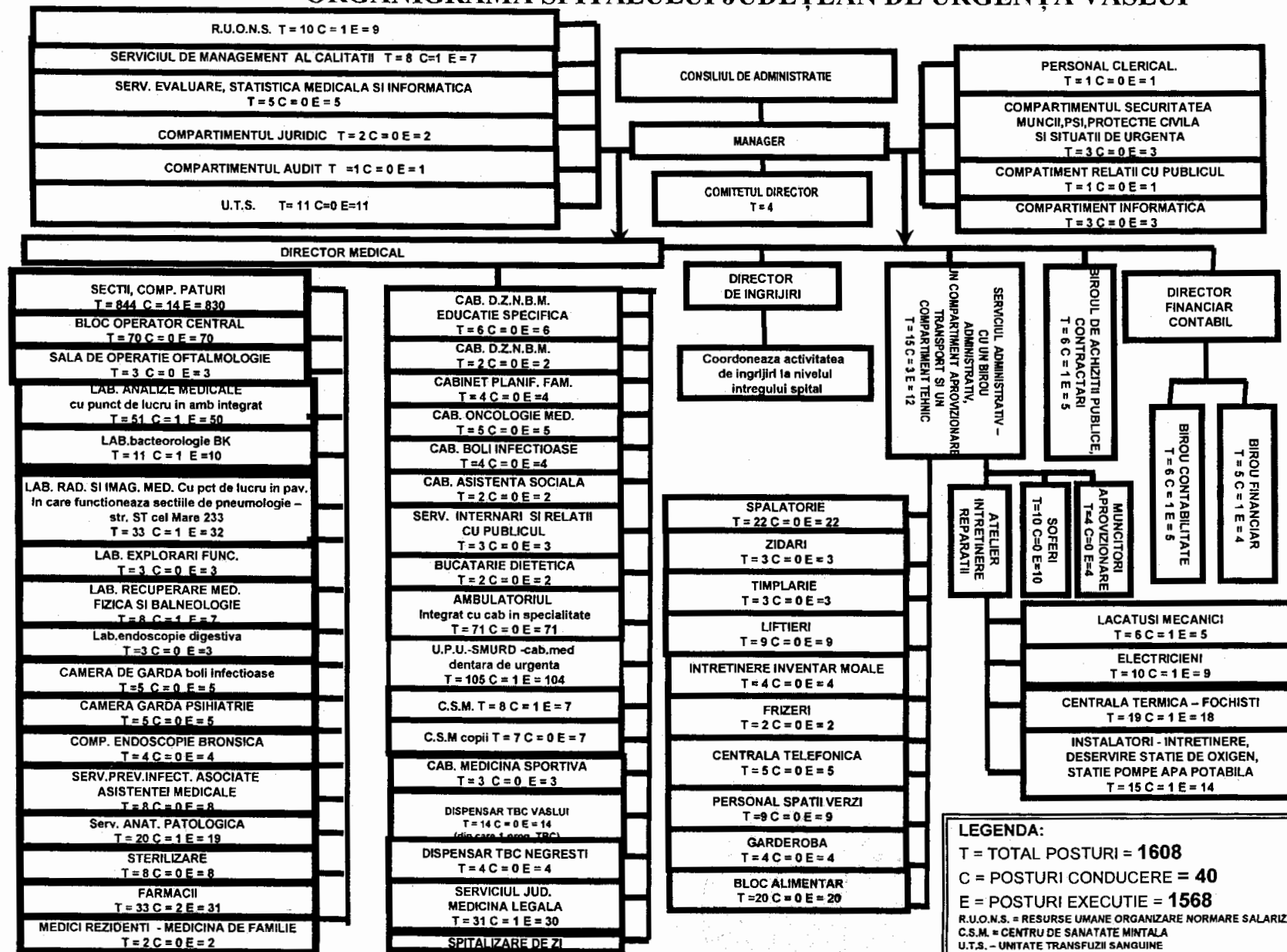
PREȘEDINTE,  
Dumitru Buzatu



Contrasemnează:  
Secretarul județului Vaslui  
Diana-Elena Ursulescu



ORGANIGRAMA SPITALULUI JUDEȚEAN DE URGENȚĂ VASLUI



**LEGENDA:**  
**T = TOTAL POSTURI = 1608**  
**C = POSTURI CONDUCERE = 40**  
**E = POSTURI EXECUTIE = 1568**  
 R.U.O.N.S. = RESURSE UMANE ORGANIZARE NORMARE SALARIZARE  
 C.S.M. = CENTRU DE SANATATE MINTALA  
 U.T.S. - UNITATE TRANSFUZII SANGUINE  
 D.Z.N.B.M. = DIABET ZAHARAT NUTRITIE BOLI METABOLICE  
 U.P.U. - SMURD = UNITATE PRIMIRE URGENTE - SERVICIUL MOBIL DE URGENTA  
 REANIMARE DESCARCARARE

CONSILIUL JUDEȚEAN VASLUI

ANEXA. nr. 2 la HCJ nr. 35 /2017

**STAT DE FUNCȚII**  
 pentru Spitalul Județean de Urgență Vaslui

Nr. crt.	COMPARTIMENT/FUNCTIE	Nivel studii	Nr. Posturi normate
<b>I. COMITET DIRECTOR</b>			<b>4</b>
1	MANAGER, GR.II	S	1,0
2	DIRECTOR MEDICAL, GR.II	S	1,0
3	DIRECTOR FINANCIAR CONTABIL, GR.II	S	1,0
4	DIRECTOR DE INGRIJIRI, GR.II	S	1,0
<b>II. SECTIA CHIRURGIE GENERALA - 74 paturi din care: compartiment neurochirurgie - 5 paturi ; compartiment urologie - 7 paturi</b>			<b>68,0</b>
5	MEDIC SEF SECTIE, GR.II	S	1,0
6-11	MEDIC PRIMAR	S	6,0
12-14	MEDIC SPECIALIST	S	3,0
15	MEDIC REZIDENT AN V	S	1,0
16	ASISTENT MEDICAL PR SEF	PL	1,0
17-32	ASISTENT MEDICAL PR	PL	16,0
33-38	ASISTENT MEDICAL	PL	6,0
39-44	ASISTENT MEDICAL DEB.	PL	6,0
45	REGISTRATOR MEDICAL DEB.	M	1,0
46-56	INFIRMIERA	G	11,0
57	INFIRMIERA DEB.	G	1,0
58-68	INGRIJITOARE	G	11,0
69-72	BRANCARDIER	G	4,0
<b>III. SECTIA CHIRURGIE SI ORTOPEDIE INFANTILA - 25</b>			<b>24,0</b>
73	MEDIC SEF SECTIE, GR.I	S	1,0
74-75	MEDIC SPECIALIST	S	2,0
76	MEDIC REZIDENT AN V	S	1,0
77	MEDIC REZIDENT AN IV	S	1,0
78	ASISTENT MEDICAL PR SEF	PL	1,0
79	ASISTENT MEDICAL LICENTIIAT PR.	S	1,0
80-86	ASISTENT MEDICAL PR	PL	7,0
87	ASISTENT MEDICAL	PL	1,0
88-91	INFIRMIERA	G	4,0
92-94	INGRIJITOARE	G	3,0
95-96	BRANCARDIER	G	2,0
<b>IV. SECTIA ORTOPEDIE SI TRAUMATOLOGIE - 25 paturi</b>			<b>27,0</b>
97	MEDIC SEF SECTIE, GR.I	S	1,0
98	MEDIC PRIMAR	S	1,0
99-100	MEDIC SPECIALIST	S	2,0
101	MEDIC REZIDENT AN V	S	1,0
102	ASISTENT MEDICAL PR SEF	PL	1,0
103-109	ASISTENT MEDICAL PR	PL	7,0
110-111	ASISTENT MEDICAL	PL	2,0
112	REGISTRATOR MEDICAL	PL	1,0
113-115	INFIRMIERA	G	3,0
116	INFIRMIERA DEBUTANTA	G	1,0
117-119	INGRIJITOARE	G	3,0
120-123	BRANCARDIER	G	4,0

<b>V. SECTIA OBSTETRICA GINECOLOGIE - 55 paturi</b>			<b>72,0</b>
124	MEDIC SEF SECTIE, GR.II	S	1,0
125-130	MEDIC PRIMAR	S	6,0
131	MEDIC SPECIALIST	S	1,0
132	MEDIC REZIDENT AN V	S	1,0
133	MEDIC REZIDENT AN II	S	1,0
134	ASISTENT SOCIAL	S	1,0
135	ASISTENT MEDICAL PR SEF	PL	1,0
136-157	ASISTENT MEDICAL PR	PL	22,0
158-163	ASISTENT MEDICAL	PL	6,0
164-166	ASISTENT MEDICAL DEB.	PL	3,0
167	REGISTRATOR MEDICAL	M	1,0
168-175	INFIRMIERA	G	9,0
176-191	INGRIJITOARE	G	15,0
192-195	BRANCARDIER	G	4,0
<b>VI. COMPARTIMENTUL OFTALMOLOGIE - 20 paturi</b>			<b>22,0</b>
196-197	MEDIC PRIMAR	S	2,0
198-199	MEDIC SPECIALIST	S	2,0
200-206	ASISTENT MEDICAL PR	PL	7,0
207	ASISTENT MEDICAL	PL	1,0
208	REGISTRATOR MEDICAL DEB.	PL	1,0
209-212	INFIRMIERA	G	4,0
213-217	INGRIJITOARE	G	5,0
<b>VII. SECTIA O.R.L. - 25 paturi din care comp.chirurgie orala si maxilo-faciale - 5 paturi</b>			<b>24,0</b>
218	MEDIC SEF SECTIE, GR.I	S	1,0
219-220	MEDIC PRIMAR	S	2,0
221-222	MEDIC SPECIALIST	S	2,0
223	ASISTENT MEDICAL PR SEF	PL	1,0
224	ASISTENT MEDICAL LICENTIAT PR	S	1,0
225-229	ASISTENT MEDICAL PR	PL	5,0
230-231	ASISTENT MEDICAL	PL	2,0
232	ASISTENT MEDICAL DEB.	PL	1,0
233-235	INFIRMIERA	G	3,0
236	INFIRMIERA DEB.	G	1,0
237-241	INGRIJITOARE	G	5,0
<b>VIII. SECTIA NEONATOLOGIE - 40 paturi din care comp.prematuri - 10 paturi si comp.terapie intensiva - 8</b>			<b>73,0</b>
242	MEDIC SEF SECTIE, GR.II	S	1,0
243-247	MEDIC SPECIALIST	S	5,0
248-249	MEDIC REZIDENT AN V	S	2,0
250	ASISTENT MEDICAL LICENTIAT PR. SEF	S	1,0
251-253	ASISTENT MEDICAL LICENTIAT PR	S	3,0
254-269	ASISTENT MEDICAL PR	PL	16,0
270-273	ASISTENT MEDICAL	PL	4,0
274-295	ASISTENT MEDICAL DEB.	PL	22,0
296-305	INFIRMIERA	G	10,0
306	INFIRMIERA DEB.	G	1,0
307-314	INGRIJITOARE	G	8,0
<b>IX. SECTIA A.T.I. - 20 paturi</b>			<b>72,0</b>
315	MEDIC SEF SECTIE, GR.I	S	1,0
316-318	MEDIC PRIMAR	S	3,0
319-324	MEDIC SPECIALIST	S	6,0
325-327	MEDIC REZIDENT AN V	S	3,0
328	MEDIC REZIDENT AN IV	S	1,0
329	ASISTENT MEDICAL LICENTIAT PR. SEF	S	1,0
330	ASISTENT MEDICAL LICENTIAT PR.	S	1,0
331-355	ASISTENT MEDICAL PR	PL	25,0
356-360	ASISTENT MEDICAL	PL	5,0
361	ASISTENT MEDICAL DEB.	PL	1,0
362	REGISTRATOR MEDICAL	M	1,0
363-371	INFIRMIERA	G	9,0
372-377	INFIRMIERA DEB.	G	6,0
378-381	INGRIJITOARE	G	4,0
382-385	BRANCARDIER	G	4,0
386	SECRETAR	M	1,0

<b>X. SECTIA NEUROLOGIE - 59 paturi din care:comp.recuperare medicala neurologie - 9 paturi</b>			<b>73,0</b>
387	MEDIC SEF SECTIE, GR.II	S	1,0
388-391	MEDIC PRIMAR	S	4,0
392-393	MEDIC SPECIALIST	S	2,0
394	KINETOTERAPEUT PRINCIPAL	S	1,0
395	ASISTENT MEDICAL PR SEF	PL	1,0
396-397	ASISTENT MEDICAL LICENTIAT PR.	S	2,0
398-409	ASISTENT MEDICAL PR	PL	12,0
410-414	ASISTENT MEDICAL	PL	5,0
415-424	ASISTENT MEDICAL DEB.	PL	10,0
425	REGISTRATOR MEDICAL	M	1,0
426-439	INFIRMIERA	G	14,0
440-452	INFIRMIERA DEB.	G	13,0
453-456	INGRIJITOARE	G	4,0
457-459	BRANCARDIER	G	3,0
<b>XI. SECTIA MEDICINA INTERNA - 89 paturi din care comp.gastroenterologie - 15 paturi; comp.D.Z.N.B.M.-10 paturi; comp.reumatologie -5 paturi; comp.nefrologie -5</b>			<b>63,0</b>
460	MEDIC SEF SECTIE, GR.II	S	1,0
461-465	MEDIC PRIMAR	S	5,0
466-468	MEDIC SPECIALIST	S	3,0
469-470	MEDIC REZIDENT AN IV	S	2,0
471	ASISTENT MEDICAL PR SEF	PL	1,0
472	ASISTENT MEDICAL LICENTIAT PR	S	1,0
473-492	ASISTENT MEDICAL PR	PL	20,0
493-495	ASISTENT MEDICAL	PL	3,0
496-497	ASISTENT MEDICAL DEB.	PL	2,0
498	REGISTRATOR MEDICAL	M	1,0
499	REGISTRATOR MEDICAL PR.	M	1,0
500-510	INFIRMIERA	G	11,0
511-512	INFIRMIERA DEB.	G	2,0
513-522	INGRIJITOARE	G	10,0
<b>XII. SECTIA BOLI INFECTIOASE- 55 paturi din care comp.HIV SIDA - 5 paturi si comp.copii - 10 paturi</b>			<b>46,0</b>
523	MEDIC SEF SECTIE, GR.II	S	1,0
524-526	MEDIC PRIMAR	S	3,0
527	MEDIC SPECIALIST	S	1,0
528	ASISTENT MEDICAL LICENTIAT PR. SEF	S	1,0
529-532	ASISTENT MEDICAL LICENTIAT PR	S	4,0
533-545	ASISTENT MEDICAL PR.	PL	13,0
546-548	ASISTENT MEDICAL	PL	3,0
549	ASISTENT MEDICAL DEB.	PL	1,0
550	REGISTRATOR MEDICAL PR	M	1,0
551	REGISTRATOR MEDICAL	M	1,0
552-558	INFIRMIERA	G	7,0
559	INFIRMIERA DEB.	G	1,0
560-568	INGRIJITOARE	G	9,0
<b>XIII. SECTIA PSIHIATRIE - 80 paturi</b>			<b>68,0</b>
569	MEDIC SEF SECTIE, GR.II	S	1,0
570-572	MEDIC PRIMAR	S	3,0
573-574	MEDIC SPECIALIST	S	2,0
575	MEDIC REZIDENT AN V	S	1,0
576	MEDIC REZIDENT AN IV	S	1,0
577	PSIHOLOG PR	S	1,0

578	ASISTENT MEDICAL PR SEF	PL	1,0
579-600	ASISTENT MEDICAL PR	PL	22,0
601	ASISTENT MEDICAL	PL	1,0
602	ASISTENT SOCIAL PR.	PL	1,0
603	INSTRUCTOR ERGOTERAPEUT DEB	M	1,0
604	REGISTRATOR MEDICAL PR.	M	1,0
605	REGISTRATOR MEDICAL	M	1,0
606-616	INFIRMIERA	G	11,0
617	INFIRMIERA DEB.	G	1,0
618-626	INGRIJITOARE	G	9,0
627-630	BRANCARDIER	G	4,0
631-636	MUNCITOR NECALIFICAT	G	6,0
<b>XIV. SECTIA PNEUMOLOGIE - 88 paturi din care: comp.</b>			<b>74,0</b>
637	MEDIC SEF SECTIE, GR.II	S	1,0
638-642	MEDIC PRIMAR	S	5,0
643-646	MEDIC SPECIALIST	S	4,0
647	MEDIC REZIDENT AN III	S	1,0
648	ASISTENT MEDICAL LICENTIIAT PR. SEF	S	1,0
649-650	ASISTENT MEDICAL LICENTIIAT PR	S	2,0
651-675	ASISTENT MEDICAL PR	PL	25,0
676	REGISTRATOR MEDICAL	M	1,0
677-689	INFIRMIERA	G	13,0
690-709	INGRIJITOARE	G	20,0
710	BRANCARDIER	G	1,0
<b>XV. SECTIA PEDIATRIE - 54 paturi</b>			<b>50,0</b>
711	MEDIC SEF SECTIE, GR.II	S	1,0
712-716	MEDIC PRIMAR	S	5,0
717	MEDIC SPECIALIST	S	1,0
718	ASISTENT MEDICAL LICENTIIAT PR. SEF	S	1,0
719-727	ASISTENT MEDICAL LICENTIIAT PR	S	9,0
728-741	ASISTENT MEDICAL PR	PL	14,0
742	ASISTENT MEDICAL	PL	1,0
743	REGISTRATOR MEDICAL	M	1,0
744-751	INFIRMIERA	G	8,0
752-760	INGRIJITOARE	G	9,0
<b>XVI. SECTIA CARDIOLOGIE - 26 paturi</b>			<b>26,0</b>
761	MEDIC SEF SECTIE, GR.I	S	1,0
762-763	MEDIC SPECIALIST	S	2,0
764	MEDIC REZIDENT AN VI	S	1,0
765	MEDIC REZIDENT AN V	S	1,0
766	ASISTENT MEDICAL PR SEF	PL	1,0
767-774	ASISTENT MEDICAL PR	PL	8,0
775	ASISTENT MEDICAL DEB	PL	1,0
776	REGISTRATOR MEDICAL DEB.	M	1,0
777-781	INFIRMIERA	G	5,0
782-786	INGRIJITOARE	G	5,0
<b>XVII. COMPARTIMENTUL DERMATOVENEROLOGIE - 16</b>			<b>16,0</b>
787-789	MEDIC PRIMAR	S	3,0
790	MEDIC SPECIALIST	S	1,0
791-796	ASISTENT MEDICAL PR	PL	6,0
797-799	INFIRMIERA	G	3,0
800-802	INGRIJITOARE	G	3,0
<b>XVIII. COMPARTIMENTUL ONCOLOGIE MEDICALA - 20 paturi din care comp.hematologie - 5 paturi</b>			<b>22,0</b>
803	MEDICI SPECIALIST	S	1,0
804	MEDIC REZIDENT AN V	S	1,0
805	MEDIC REZIDENT AN IV	S	1,0
806-809	ASISTENT MEDICAL PR	PL	4,0
810-8111	ASISTENT MEDICAL	PL	2,0
812-813	ASISTENT MEDICAL DEB.	PL	2,0
814	REGISTRATOR MEDICAL DEB.	M	1,0
815-817	INFIRMIERA	G	3,0
818-823	INGRIJITOARE	G	6,0
824	BRANCARDIER	G	1,0

<b>XIX. COMPARTIMENTUL RECUPERARE, MEDICINA FIZICA SI BALNEOLOGIE - 16 paturi</b>		<b>0</b>	<b>24,0</b>
825-826	MEDIC SPECIALIST	S	2,0
827	KINETOTERAPEUT	S	1,0
828-837	ASISTENT MEDICAL PR	PL	10,0
838	REGISTRATOR MEDICAL PR.	M	1,0
839-846	INFIRMIERA	G	8,0
847-848	INGRIJITOARE	G	2,0
<b>XX. BLOC OPERATOR CENTRAL</b>			<b>70,0</b>
849	ASISTENT MEDICAL LICENTIIAT PR SEF	S	1,0
850-853	ASISTENT MEDICAL LICENTIIAT PR	S	4,0
854-875	ASISTENT MEDICAL PR	PL	22,0
876-877	ASISTENT MEDICAL	PL	2,0
878-879	ASISTENT MEDICAL	PL	2,0
880-888	INFIRMIERA	G	9,0
889-900	INFIRMIERA DEB.	G	12,0
901-908	INGRIJITOARE	G	8,0
909-918	BRANCARDIER	G	10,0
<b>XXI. SALA OPERATII OFTALMOLOGIE</b>			<b>3,0</b>
919-920	ASISTENT MEDICAL PR	PL	2,0
921	INFIRMIERA DEB.	G	1,0
<b>XXII. U.T.S.</b>			<b>11,0</b>
922-923	ASISTENT MEDICAL LICENTIIAT PR.	S	2,0
924-927	ASISTENT MEDICAL PR	PL	4,0
928	ASISTENT MEDICAL	PL	1,0
929	ASISTENT MEDICAL DEB	PL	1,0
930-932	INGRIJITOARE	G	3,0
<b>XXIII. LABORATOR ANALIZE MEDICALE CU PUNCT DE LUCRU IN AMBULATORIUL INTEGRAT</b>			<b>61,0</b>
933	MEDIC SEF LABORATOR, GR.II	S	1,0
934	MEDIC PRIMAR	S	1,0
935-936	MEDIC SPECIALIST	S	2,0
937	MEDIC REZIDENT AN IV	S	1,0
938	MEDIC REZIDENT AN V	S	1,0
939-940	BIOLOG PR	S	2,0
941	BIOLOG SPECIALIST	S	1,0
942-947	CHIMIST PR	S	6,0
948	CHIMIST SPECIALIST	S	1,0
949-951	CHIMIST	S	3,0
952	CHIMIST DEB.	S	1,0
953	BIOLOG DEB.	S	1,0
954	ASISTENT MEDICAL PR SEF	PL	1,0
955-971	ASISTENT MEDICAL PR	PL	17,0
972-976	ASISTENT MEDICAL	PL	5,0
977-978	ASISTENT MEDICAL DEB.	PL	2,0
979	REGISTRATOR MEDICAL PR	M	1,0
980-983	INGRIJITOARE	G	4,0
<b>XXIV. LABORATOR BACTERIOLOGIE BK</b>			<b>11,0</b>
984	MEDIC SEF LABORATOR, GR.I	S	1,0
985	MEDIC SPECIALIST	S	1,0
986	BIOLOG SPECIALIST	S	1,0
987	BIOLOG	S	1,0
988	BIOLOG DEBUTANT	S	1,0
989-993	ASISTENT MEDICAL PR	PL	5,0
994	INGRIJITOARE	G	1,0
<b>XXV. LABORATOR RADIOLOGIE SI IMAGISTICA MEDICALA cu pct de lucru in pavilionul in care functioneaza sectiile de pneumologie - str. St. cel Mare nr. 233 - Compartiment CT</b>			<b>33,0</b>
995	MEDIC SEF LABORATOR, GR.II	S	1,0
996-998	MEDIC SPECIALIST	S	3,0
999-1000	MEDIC REZIDENT AN V	S	2,0
1001	FIZICIAN SPECIALIST	S	1,0
1002	ASISTENT MEDICAL PR SEF	PL	1,0
1003	ASISTENT MEDICAL LICENTIIAT PR.	S	1,0
1004-1014	ASISTENT MEDICAL PR	PL	11,0



1015-1020	ASISTENT MEDICAL	PL	6,0
1021	ASISTENT MEDICAL DEBUTANT	PL	1,0
1022	REGISTRATOR MEDICAL PR.	G	1,0
1023-1027	INGRIJITOARE	G	5,0
<b>XXVI. LABORATOR EXPLORARI FUNCTIONALE</b>			<b>3,0</b>
1028	MEDIC SPECIALIST	S	1,0
1029	ASISTENT MEDICAL PR	PL	1,0
1030	ASISTENT MEDICAL	PL	1,0
<b>XXVII. LABORATOR RECUPERARE, MEDICINA FIZICA SI</b>			<b>8,0</b>
1031	MEDIC SEF LABORATOR, GR.I	S	1,0
1032	MEDIC SPECIALIST	S	1,0
1033	PROFESOR CFM	S	1,0
1034-1037	ASISTENT MEDICAL PR	PL	4,0
1038	INGRIJITOARE	G	1,0
<b>XXVIII. LABORATOR ENDOSCOPIE DIGESTIVA</b>			<b>3,0</b>
1039	ASISTENT MEDICAL LICENTIIAT PR.	S	1,0
1040	ASISTENT MEDICAL PR	PL	1,0
1041	INGRIJITOARE	G	1,0
<b>XXIX. CAMERA DE GARDA BOLI INFECTIOASE</b>			<b>5,0</b>
1042	ASISTENT MEDICAL PR	PL	1,0
1043-1044	ASISTENT MEDICAL	PL	2,0
1045-1046	ASISTENT MEDICAL DEB.	PL	2,0
<b>XXX. CAMERA DE GARDA PSIHIARIE</b>			<b>6,0</b>
1047	ASISTENT MEDICAL	S	1,0
1048	ASISTENT MEDICAL PR.	PL	1,0
1049-1051	ASISTENT MEDICAL DEB.	PL	3,0
<b>XXXI. COMPARTAMENT ENDOSCOPIE BRONSICA</b>			<b>4,0</b>
1052	ASISTENT MEDICAL LICENTIIAT PR	S	1,0
1053-1054	ASISTENT MEDICAL PR	PL	2,0
1055	INGRIJITOARE	G	1,0
<b>XXXII. SERVICIUL DE PREVENIRE A INFECTIILOR ASOCIATE ASISTENTEI MEDICALE</b>			<b>8,0</b>
1056	MEDIC PRIMAR	S	1,0
1057	MEDIC SPECIALIST	S	1,0
1058	MEDIC REZIDENT AN III	S	1,0
1059-1060	ASISTENT MEDICAL LICENTIIAT PR	S	2,0
1061	ASISTENT MEDICAL PR	PL	1,0
1062-1063	AGENT DDD	G	2,0
<b>XXXIII. SERVICIUL DE ANATOMIE PATOLOGICA cu comp. citologie, comp. histopatologie, comp. prosectura)</b>			<b>20,0</b>
1064	MEDIC SEF SERVICIU, GR.II	S	1,0
1065-1066	MEDIC PRIMAR	S	2,0
1067	MEDIC SPECIALIST	S	1,0
1068-1071	ASISTENT MEDICAL PR	PL	4,0
1072-1075	ASISTENT MEDICAL	PL	4,0
1076-1079	ASISTENT MEDICAL DEB.	PL	4,0
1080-1081	INGRIJITOARE	G	2,0
1082-1083	AUTOPSIER PRINCIPAL	M	2,0

<b>XXXIV. STERILIZARE</b>			<b>8,0</b>
1084	ASISTENT MEDICAL PR SEF	PL	1,0
1085	ASISTENT MEDICAL LICENTIAT PR	S	1,0
1086-1089	ASISTENT MEDICAL PR	PL	4,0
1090-1091	INGRIJITOARE	G	2,0
<b>XXXV. FARMACII CU CIRCUIT INCHIS</b>			<b>33,0</b>
<b>FARMACIA NR. 1</b>			<b>18,0</b>
1092	FARMACIST SEF SECTIE, GR.II	S	1,0
1093	FARMACIST	S	1,0
1094-1102	ASISTENT MEDICAL PR	PL	9,0
1103-1104	ASISTENT MEDICAL	PL	2,0
1105	ASISTENT MEDICAL DEB.	PL	1,0
1106-1108	INGRIJITOARE	G	3,0
1109	OPERATOR CONTROLOR DATE III	M	1,0
<b>FARMACIA NR. 2</b>			<b>8,0</b>
1110	FARMACIST SEF SECTIE, GR.I	S	1,0
1111	FARMACIST	S	1,0
1112-1115	ASISTENT MEDICAL PR	PL	4,0
1116-1117	INGRIJITOARE	G	2,0
<b>FARMACIA NR. 3</b>			<b>7,0</b>
1118	FARMACIST REZIDENT AN.III	S	1,0
1119	FARMACIST SPECIALIST	S	1,0
1120-1123	ASISTENT MEDICAL PR	PL	4,0
1124	INGRIJITOARE	G	1,0
<b>XXXVI. CABINET DIABET ZAHARAT, NUTRITIE SI BOLI METABOLICE - EDUCATIE SPECIFICA</b>			<b>6,0</b>
1125	MEDIC PRIMAR	S	1,0
1126	MEDIC SPECIALIST	S	1,0
1127-1129	ASISTENT MEDICAL PR	PL	3,0
1130	INGRIJITOARE	G	1,0
<b>XXXVII. CABINET DIABET ZAHARAT, NUTRITIE SI BOLI</b>			<b>2,0</b>
1131	MEDIC SPECIALIST	S	1,0
1132	ASISTENT MEDICAL PR	PL	1,0
<b>XXXVIII. CABINET PLANIFICARE FAMILIALA</b>			<b>4,0</b>
1133	MEDIC PRIMAR	S	1,0
1134	MEDIC SPECIALIST	S	1,0
1135-1136	ASISTENT MEDICAL PR	PL	2,0
<b>XXXIX. CABINET ONCOLOGIE MEDICALA</b>			<b>5,0</b>
1137	MEDIC PRIMAR	S	1,0
1138	MEDIC SPECIALIST	S	1,0
1139-1140	ASISTENT MEDICAL PR	PL	2,0
1141	REGISTRATOR MEDICAL PR.	M	1,0
<b>XL. CABINET BOLI INFECTIOASE</b>			<b>4,0</b>
1142-1143	MEDIC SPECIALIST	S	2,0
1144	ASISTENT MEDICAL PR	PL	1,0
1145	ASISTENT MEDICAL	PL	1,0
<b>XLI. CABINET ASISTENTA SOCIALA</b>			<b>2,0</b>
1146	ASISTENT SOCIAL PR.	S	1,0
1147	ASISTENT SOCIAL	S	1,0
<b>XLII. SERVICIUL EVALUARE, STATISTICA MEDICALA SI</b>			<b>5,0</b>
1148	BIOINGINER MEDICAL SPECIALIST	S	1,0
1149	ASISTENT MEDICAL LICENTIAT PR	S	1,0
1150	ASISTENT MEDICAL PR	PL	1,0
1151	ANALIST PROGRAMATOR I	S	1,0
1152	STATISTICIAN PR	M	1,0
<b>XLIII. SERVICIUL DE INTERNARI SI RELATII CU PUBLICUL</b>			<b>3,0</b>
1153-1154	REGISTRATOR MEDICAL PR	M	2,0
1155	REGISTRATOR MEDICAL	M	1,0

<b>XLIV. BUCATARIE DIETETICA</b>			<b>2,0</b>
1156-1157	ASISTENT MEDICAL	PL	2,0
<b>XLV. SPALATORIE</b>			<b>22,0</b>
1158-1159	SPALATOREASA CU GESTIUNE	G	2,0
1160-1179	SPALATOREASA	G	20,0
<b>XLVI. COMPARTIMENT RELATII CU PUBLICUL</b>			<b>1,0</b>
1180	REFERENT TR. IA	M	1,0
<b>XLVII. COMPARTIMENTUL SECURITATEA MUNCII, PSI, PROTECTIE CIVILA SI SITUATII DE URGENTA</b>			<b>3,0</b>
1181	REFERENT DE SPECIALITATE GR.II	S	1,0
1182	REFERENT DEBUTANT	M	1,0
1183	MUNCITOR TR.I.	PR	1,0
<b>XLVIII. SERVICIUL R.U.O.N.S.</b>			<b>10,0</b>
1184	SEF SERV. GR.II	S	1,0
1185	ECONOMIST GR.IA	S	1,0
1186	ECONOMIST GR.I	S	1,0
1187	ECONOMIST GR.II	S	1,0
1188	REFERENT DE SPECIALITATE GR.II	S	1,0
1189-1190	REFERENT DE SPECIALITATE GR.III	S	2,0
1191-1192	REFERENT TR. IA	M	2,0
1193	OPERATOR CONTROLOR DATE TR.I	M	1,0
<b>XLIX. SERVICIUL ADMINISTRATIV CU UN BIROU ADMINISTRATIV, UN COMPARTIMENT APROVIZIONARE TRANSPORT SI UN COMPARTIMENT TEHNIC</b>			<b>15,0</b>
1194	SEF SERVICIU GR.II	S	1,0
1195	SEF BIROU, GR.II	S	1,0
1196	SEF ATELIER INTRETINERE SI REPARATII, GR.II	SSD	1,0
1197	BIOINGINER MEDICAL SPECIALIST	S	1,0
1198	TEHNICIAN PR.SANITAR	PL	1,0
1199	DACTILOGRAF TR. I	M	1,0
1200-1202	FUNCTIONAR	M	3,0
1203	SECRETAR DACTILOGRAF TR. IA	M	1,0
1204	ARHIVAR	M	1,0
1205-1206	SEF DEPOZIT GR.I.	M	2,0
1207	MERCEOLOG TR. IA	M	1,0
1208	MAGAZINER	M	1,0
<b>L. BIROUL DE ACHIZITII PUBLICE, CONTRACTARI</b>			<b>6,0</b>
1209	SEF BIROU GR.II	S	1,0
1210	ECONOMIST GR. IA	S	1,0
1211	INGINER DEB.	S	1,0
1212	REFERENT DE SPECIALITATE GR.II	S	1,0
1213	INGINER GR.II	S	1,0
1214	REFERENT TR. IA	M	1,0
<b>LI. BIROU CONTABILITATE</b>			<b>6,0</b>
1215	SEF BIROU GR.II	S	1,0
1216-1218	ECONOMIST GR. IA	S	3,0
1219	ECONOMIST GR.II	S	1,0
1220	CONTABIL TR.IA	M	1,0
<b>LII. BIROU FINANCIAR</b>			<b>5,0</b>
1221	SEF BIROU GR.II	S	1,0
1222	ECONOMIST GR. IA	S	1,0
1223-1224	CONTABIL TR.IA	M	2,0
1225	CASIER	M	1,0
<b>LIII. PERSONAL CLERICAL</b>			<b>1,0</b>
1226	PREOT DEFINITIV	S	1,0
<b>LIV. COMPARTIMENT AUDIT</b>			<b>1,0</b>
1227	AUDITOR GR. I	S	1,0

<b>LV. COMPARTIMENTUL INFORMATICA</b>			<b>3,0</b>
1228	INFORMATICIAN GR. III	SSD	1,0
1229	INGINER DE SISTEM GR.IA	S	1,0
1230	OPERATOR CONTROLOR DATE TR.II	M	1,0
<b>LVI. COMPARTIMENTUL JURIDIC</b>			<b>2,0</b>
1231	CONSILIER JURIDIC GR.IA	S	1,0
1232	CONSILIER JURIDIC GR.I	S	1,0
<b>LVII. SERVICIUL DE MANAGEMENT AL CALITATII</b>			<b>8,0</b>
1233	SEF SERVICIU GR.I	S	1,0
1234	MEDIC SPECIALIST	S	1,0
1235	ASISTENT MEDICAL LICENTIAT PR	S	1,0
1236	ASISTENT MEDICAL DEB.	S	1,0
1237-1238	ECONOMIST GR.II	S	2,0
1239	BIOINGINER MEDICAL SPECIALIST	S	1,0
1240	CONSILIER JURIDIC DEBUTANT	S	1,0
<b>LVIII. MUNCITORI</b>			<b>123,0</b>
<b>ZIDARI</b>			<b>3,0</b>
1241	MUNCITOR CALIFICAT TR.III		1,0
1242-1243	MUNCITOR CALIFICAT TR.IV		2,0
<b>TIMPLARI</b>			<b>3,0</b>
1244-1245	MUNCITOR CALIFICAT TR.III		2,0
1246	MUNCITOR CALIFICAT TR.IV		1,0
<b>LACATUSI MECANICI</b>			<b>6,0</b>
1247	SEF ECHIPA		1,0
1248	MUNCITOR CALIFICAT TR.I		1,0
1249-1251	MUNCITOR CALIFICAT TR.II		3,0
1252	MUNCITOR CALIFICAT TR.III		1,0
<b>ELECTRICIENI - INTRETINERE, DESERVIRE GRUP ELECTROGEN</b>			<b>10,0</b>
1253	SEF ECHIPA		1,0
1254-1257	MUNCITOR CALIFICAT TR.II		4,0
1258	MUNCITOR CALIFICAT TR.III		1,0
1259-1262	MUNCITOR CALIFICAT TR.IV		4,0
<b>DESERVIRE CENTRALA TERMICA I</b>			<b>10,0</b>
1263	SEF ECHIPA		1,0
1264	MUNCITOR CALIFICAT TR.I		1,0
1265-1267	MUNCITOR CALIFICAT TR.II		3,0
1268-1270	MUNCITOR CALIFICAT TR.III		3,0
1271-1272	MUNCITOR CALIFICAT TR.IV		2,0
<b>DESERVIRE CENTRALA TERMICA II</b>			<b>9,0</b>
1273-1274	MUNCITOR CALIFICAT TR.I		2,0
1275-1276	MUNCITOR CALIFICAT TR.II		2,0
1277-1278	MUNCITOR CALIFICAT TR.III		2,0
1279-1281	MUNCITOR CALIFICAT TR.IV		3,0
<b>INSTALATORI - INTRETINERE, DESERVIRE STATIE DE OXIGEN, STATIE POMPE APA POTABILA</b>			<b>15,0</b>
1282	SEF ECHIPA		1,0
1283-1288	MUNCITOR CALIFICAT TR.I		6,0
1289-1291	MUNCITOR CALIFICAT TR.II		3,0
1292-1295	MUNCITOR CALIFICAT TR.III		4,0
1296	MUNCITOR CALIFICAT TR.IV		1,0
<b>DESERVIRE LIFTURI</b>			<b>9,0</b>
1297-1305	MUNCITOR CALIFICAT TR.IV		9,0
<b>INTRETINERE INVENTAR MOALE</b>			<b>4,0</b>
1306-1309	MUNCITOR CALIFICAT TR.II		4,0
<b>FRIZERIE</b>			<b>2,0</b>
1310-1311	MUNCITOR CALIFICAT TR.IV		2,0
<b>CENTRALA TELEFONICA</b>			<b>5,0</b>
1312-1316	MUNCITOR CALIFICAT TR.III		5,0
<b>INTRETINERE SPATII VERZI-DESERVIRE CREMATORIU</b>			<b>9,0</b>
1317	MUNCITOR CALIFICAT TR.III		1,0
1318-1325	MUNCITOR NECALIFICAT TR.I		8,0

	<b>ACTIVITATE CONDUCERE AUTO</b>		<b>10,0</b>
1326-1330	SOFER TR. I		5,0
1331-1335	SOFER TR. II		5,0
	<b>GARDEROBA</b>		<b>4,0</b>
1336-1339	GARDEROBIERA	M,G	4,0
	<b>BLOCURI ALIMENTARE - BUCATARI</b>		<b>9,0</b>
1340-1345	MUNCITOR CALIFICAT TR.II		6,0
1346	MUNCITOR CALIFICAT TR.III		1,0
1347-1348	MUNCITOR CALIFICAT TR.IV		2,0
	<b>MUNCITORI NECALIFICATI BUCATARIE</b>		<b>11,0</b>
1349-1359	MUNCITOR NECALIFICAT		11,0
	<b>MUNCITORI APROVIZIONARE</b>		<b>4,0</b>
1360-1363	MUNCITOR NECALIFICAT		4,0
	<b>LIX. AMBULATORIU INTEGRATCU CABINETE IN SPECIALITATE</b>		<b>71,0</b>
	<b>CABINET MEDICINA INTERNA</b>		<b>2,0</b>
1364-1365	ASISTENT MEDICAL PR	PL	2,0
	<b>CABINET CARDIOLOGIE</b>		<b>2,0</b>
1366-1367	ASISTENT MEDICAL DEB.	PL	2,0
	<b>CABINET CARDIOLOGIE PEDIATRICA</b>		<b>4,0</b>
1368	MEDIC SPECIALIST	S	1,0
1369	MEDIC REZIDENT AN V	S	1,0
1370-1371	ASISTENT MEDICAL DEB.	PL	2,0
	<b>SALA TRATAMENT</b>		<b>1,0</b>
1372	ASISTENT MEDICAL	PL	1,0
	<b>CABINET O.R.L.</b>		<b>2,0</b>
1373	ASISTENT MEDICAL PR	PL	1,0
1374	ASISTENT MEDICAL	PL	1,0
	<b>CABINET AUDIOLOGIE</b>		<b>2,0</b>
1375	ASISTENT MEDICAL PR	PL	1,0
1376	ASISTENT MEDICAL	PL	1,0
	<b>CABINET MEDICINA MUNCII</b>		<b>4,0</b>
1377-1378	MEDIC SPECIALIST	S	2,0
1379-1380	ASISTENT MEDICAL PR	PL	2,0
	<b>CABINET OFTALMOLOGIE</b>		<b>2,0</b>
1381-1382	ASISTENT MEDICAL PR	PL	2,0
	<b>CABINET ENDOCRINOLOGIE</b>		<b>4,0</b>
1383	MEDIC PRIMAR	S	1,0
1384	MEDIC REZIDENT AN V	S	1,0
1385-1386	ASISTENT MEDICAL DEB.	PL	2,0
	<b>CABINET OBSTETRICA GINECOLOGIE</b>		<b>2,0</b>
1387	ASISTENT MEDICAL LICENTIIAT PR	S	1,0
1388	ASISTENT MEDICAL PR	PL	1,0
	<b>CABINET NEUROLOGIE</b>		<b>2,0</b>
1389-1390	ASISTENT MEDICAL PR	PL	2,0
	<b>CABINET ORTOPEDIE SI TRAUMATOLOGIE</b>		<b>2,0</b>
1391-1392	ASISTENT MEDICAL PR	PL	2,0
	<b>CABINET DERMATOVENEROLOGIE</b>		<b>2,0</b>
1393-1394	ASISTENT MEDICAL PR	PL	2,0
	<b>CABINET UROLOGIE</b>		<b>3,0</b>
1395	MEDIC SPECIALIST	S	1,0
1396-1397	ASISTENT MEDICAL PR	PL	2,0
	<b>CABINET CHIRURGIE PEDIATRICA</b>		<b>2,0</b>
1395-1399	ASISTENT MEDICAL PR	PL	2,0

	<b>CABINET CHIRURGIE GENERALA</b>		<b>2,0</b>
1400	ASISTENT MEDICAL PR	PL	1,0
1401	ASISTENT MEDICAL	PL	1,0
	<b>CABINET PEDIATRIE</b>		<b>3,0</b>
1402-1403	ASISTENT MEDICAL PR	PL	2,0
1404	ASISTENT MEDICAL	PL	1,0
	<b>CABINET REUMATOLOGIE</b>		<b>2,0</b>
1405	MEDIC SPECIALIST	S	1,0
1406	ASISTENT MEDICAL	PL	1,0
	<b>CABINET PNEUMOLOGIE</b>		<b>2,0</b>
1407	ASISTENT MEDICAL PR	PL	1,0
1408	ASISTENT MEDICAL	PL	1,0
	<b>CABINET RECUPERARE, MEDICINA FIZICA SI BALNEOLOGIE</b>		<b>2,0</b>
1409-1410	ASISTENT MEDICAL	PL	2,0
	<b>PUNCT DE LUCRU AL LABORATORULUI DE ANALIZE MEDICALE AL SPITALULUI</b>		<b>2,0</b>
1411-1412	ASISTENT MEDICAL PR	PL	2,0
	<b>CABINET NEFROLOGIE</b>		<b>2,0</b>
1413	MEDIC SPECIALIST	S	1,0
1414	ASISTENT MEDICAL	PL	1,0
	<b>CABINET ALERGOLOGIE SI IMUNOLOGIE CLINICA</b>		<b>2,0</b>
1415	MEDIC SPECIALIST	S	1,0
1416	ASISTENT MEDICAL PR.	PL	1,0
	<b>LABORATOR RECUPERARE, MEDICINA FIZICA SI BALNEOLOGIE</b>		<b>3,0</b>
1417-1419	ASISTENT MEDICAL PR	PL	3,0
	<b>LABORATOR RADIOLOGIE SI IMAGISTICA MEDICALA</b>		<b>2,0</b>
1420-1421	ASISTENT MEDICAL PR	PL	2,0
	<b>LABORATOR DE EXPLORARI FUNCTIONALE</b>		<b>2,0</b>
1422-1423	ASISTENT MEDICAL PR	PL	2,0
	<b>STERILIZARE</b>		<b>2,0</b>
1424-1425	ASISTENT MEDICAL	PL	2,0
	<b>COMPARTIMENT STATISTICA MEDICALA</b>		<b>2,0</b>
1426-1427	STATISTICIAN PR	M	2,0
	<b>FISIERE</b>		<b>2,0</b>
1428-1429	REGISTRATOR MEDICAL PR	M	2,0
	<b>PERSONAL CURATENIE</b>		<b>5,0</b>
1430-1434	INGRIJITOARE	G	5,0
	<b>LX. UNITATE PRIMIRE URGENTE - SMURD cu Cabinet Medicina Dentara de Urgenta</b>		<b>105,0</b>
1435	MEDIC SEF SECTIE, GR.II	S	1,0
1436-1437	MEDIC PRIMAR	S	2,0
1438-1444	MEDIC SPECIALIST	S	7,0
1445	MEDIC	S	1,0
1446-1450	MEDIC REZIDENT AN V	S	5,0
1451	ASISTENT SOCIAL PR.	S	1,0
1452	ASISTENT SOCIAL DEBUTANT	S	1,0
1453-1454	ASISTENT SOCIAL	S	2,0
1455	ASISTENT SOCIAL DEBUTANT	S	1,0
1456	ASISTENT MEDICAL PR SEF	PL	1,0
1457-1488	ASISTENT MEDICAL PR	PL	32,0
1489-1501	ASISTENT MEDICAL	PL	13,0
1502	ASISTENT MEDICAL DEBUTANT	PL	1,0
1503-1504	REGISTRATOR MEDICAL PR.	M	2,0
1505-1506	REGISTRATOR MEDICAL	M	2,0
1507	REGISTRATOR MEDICAL DEB.	M	1,0
1508-1519	INFIRMIERA	G	12,0
1520-1526	INGRIJITOARE	G	7,0
1527-1538	BRANCARDIER	G	12,0
1539	SECRETAR DACTILOGRAF TR.I	M	1,0

<b>LXI. CENTRUL DE SANATATE MINTALA</b>			<b>8,0</b>
1540	MEDIC SEF CENTRU GR I	S	1,0
1541	MEDIC SPECIALIST	S	1,0
1542	PSIHOLOG SPECIALIST	S	1,0
1543	PSIHOLOG PRACTICANT	S	1,0
1544	SOCIOLOG PR.	S	1,0
1545-1546	ASISTENT MEDICAL PR	PL	2,0
1547	REGISTRATOR MEDICAL PR.	M	1,0
<b>LXII. CENTRUL DE SANATATE MINTALA - COPII</b>			<b>7,0</b>
1548	MEDIC PRIMAR	S	1,0
1549	MEDIC REZIDENT AN IV	S	1,0
1550	LOGOPED PRINCIPAL	S	1,0
1551	PSIHOLOG STAGIAR	S	1,0
1552	ASISTENT MEDICAL PR	PL	1,0
1553	SOCIOLOG DEBUTANT	S	1,0
1554	ASISTENT MEDICAL	PL	1,0
<b>LXIII. CABINET MEDICINA SPORTIVA</b>			<b>3,0</b>
1555	MEDIC SPECIALIST	S	1,0
1556	PROFESOR PR	S	1,0
1557	ASISTENT MEDICAL PR	PL	1,0
<b>LXIV. DISPENSAR T.B.C. cu radiologie, cab. consultatii, cab. asistente teren, registratura si fisier</b>			<b>14,0</b>
1558	MEDIC PRIMAR	S	1,0
1559-1560	MEDIC SPECIALIST	S	2,0
1561	ASISTENT MEDICAL LICENTIIAT PR	S	1,0
1562-1567	ASISTENT MEDICAL PR	PL	6,0
1568	REGISTRATOR MEDICAL PR	M	1,0
1569-1570	INGRIJITOARE	G	2,0
1571	SOFER TR. II	M	1,0
<b>LXV. DISPENSAR T.B.C. NEGRESTI</b>			<b>4,0</b>
1572	MEDIC SPECIALIST	S	1,0
1573	ASISTENT MEDICAL LICENTIIAT PR	S	1,0
1574	ASISTENT MEDICAL PR.	PL	1,0
1575	INGRIJITOARE	G	1,0
<b>LXVI. SERVICIUL JUDETEAN DE MEDICINA LEGALA</b>			<b>31,0</b>
1576	MEDIC SEF SERV. GR.II	S	1,0
1577-1578	MEDIC PRIMAR	S	2,0
1579-1580	MEDIC SPECIALIST	S	2,0
1581	MEDIC REZIDENT AN V	S	1,0
1582	BIOLOG	S	1,0
1583-1584	CHIMIST PR	S	2,0
1585	PSIHOLOG	S	1,0
1586-1590	ASISTENT MEDICAL PR	PL	5,0
1591-1592	ASISTENT MEDICAL	PL	2,0
1593-1594	ASISTENT MEDICAL DEB.	PL	2,0
1595-1596	AUTOPSIER PRINCIPAL	M	2,0
1597-1598	AUTOPSIER	M	2,0
1599	AUTOPSIER DEB.	M	1,0
1600-1604	INGRIJITOARE	G	5,0
1605-1606	BRANCARDIER	G	2,0
<b>LXVII. COMPARTIMENT MEDICI REZIDENTI- MEDICINA DE FAMILIE</b>			<b>2,0</b>
1607-1608	MEDIC REZIDENT AN II	S	2,0
<b>TOTAL</b>			<b>1608,0</b>